



Alexandra Park Road, N10

£475,000

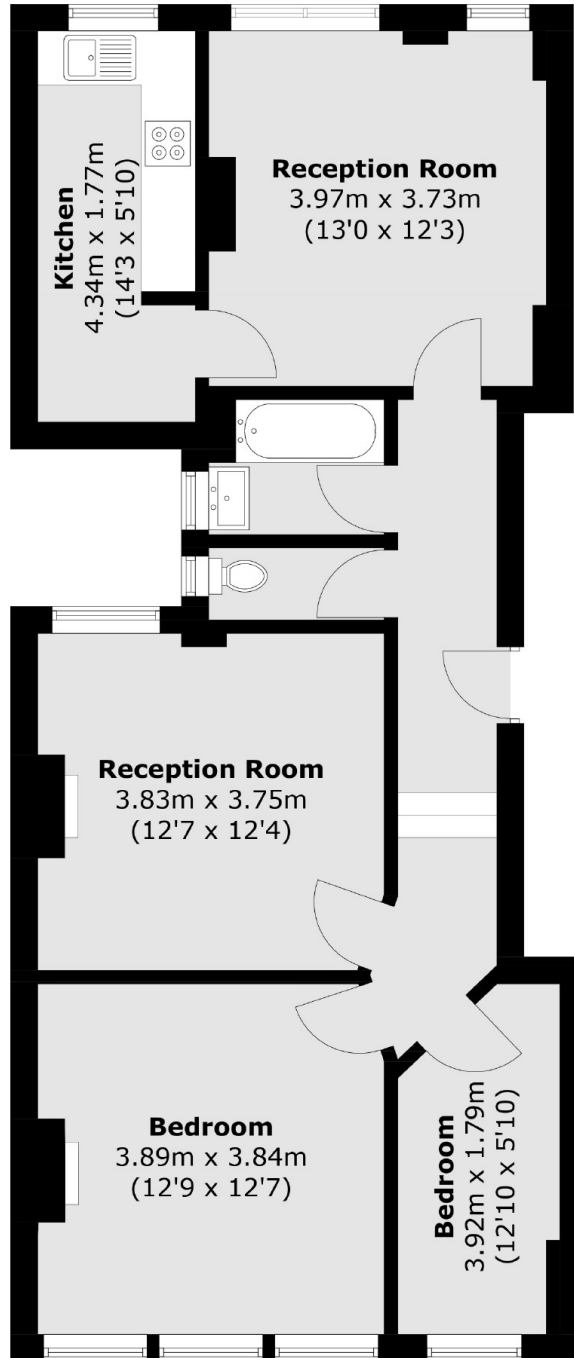
This three-bedroom flat situated on the first floor of a period building showcasing large, bright and airy rooms with high ceilings big windows and fireplace features is ideal for those looking for timeless character with a share of freehold being sold on a chain free basis.

Situated within catchment of Rhodes Avenue primary and Alexandra Park secondary schools, close to Bounds Green tube station (Piccadilly Line), Alexandra Palace with its main line station to Moorgate and Old Street. Muswell Hill Broadway is also a short distance away.

Features

- Three Bedrooms
- First Floor
- Share of Freehold
- Great School Catchment
- Generously Sized Rooms
- Chain Free

Alexandra Park Road, London, N10



Total area (approx.): 74.5 sq. m (801.9 sq. ft)