



Royal Drive, N11

£550,000

A modern two bedroom two bathroom apartment with direct access to a private patio garden forming part of the landmark Princess Park Manor development set on 30 acres of parkland with 24-hour security.

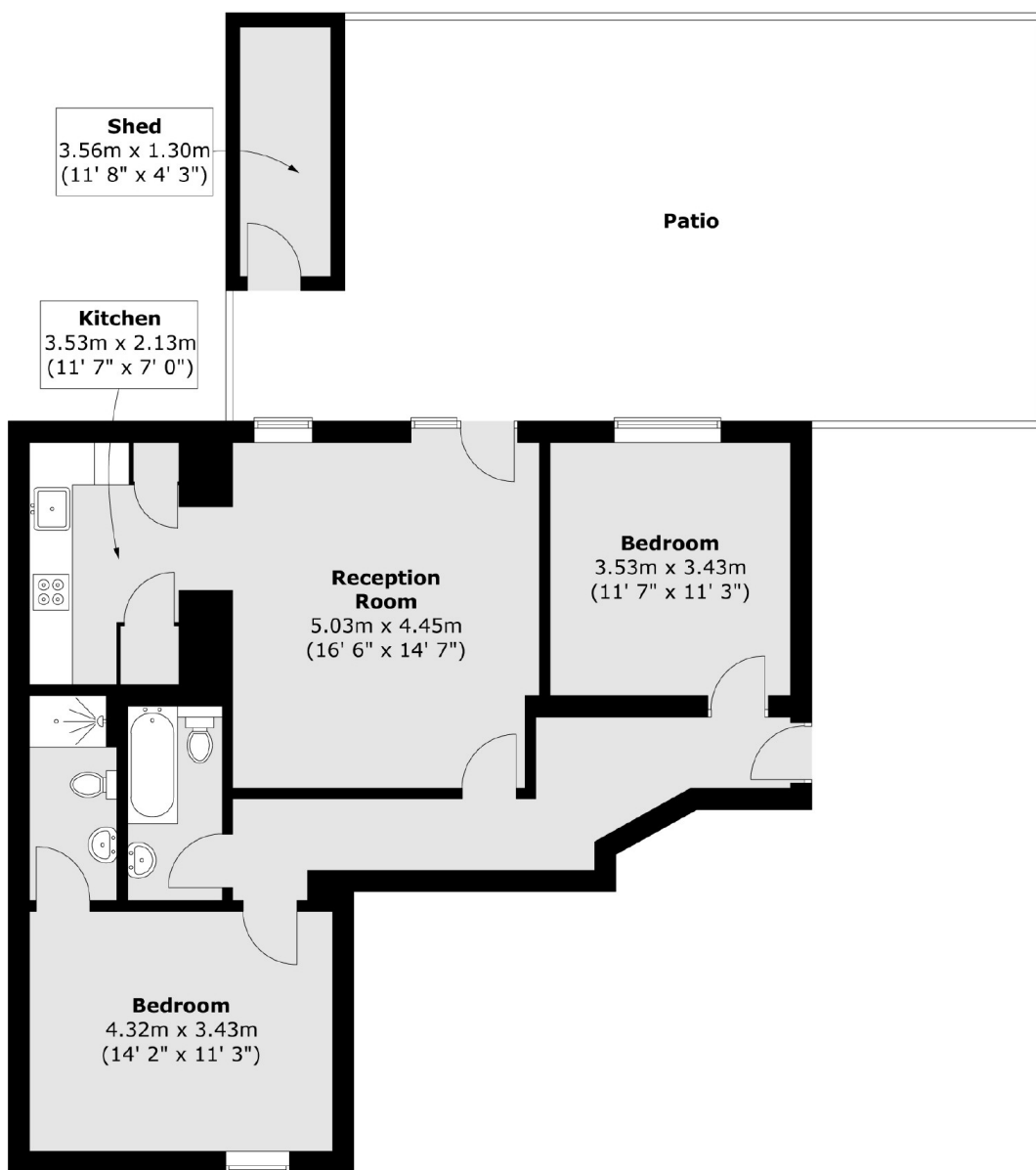
Located within easy reach of local shops and restaurants and with excellent transport links from New Southgate Station (National Rail) and Arnos Grove Tube (Piccadilly Line).

Features

- 2 Bedrooms
- 2 Bathrooms
- Private Patio Garden
- Wooden Flooring
- Chain Free Sale
- Private Parking

Royal Drive, London, N11

Lower Ground Floor



Total area (approx.) : 81.2 sq. m (874 sq. ft)
Total shed area (approx.) : 4.6 sq. m (49 sq. ft)
Total patio area (approx.) : 59.5 sq. m (640 sq. ft)