



## Powys Lane, N14

£2,100,000

This grand five bedroom, four bathroom detached family home has been stylishly finished to a high specification. Arranged over 3630 SQFT, this impressive home overlooks Broomfield Park and offers off street parking, a lower ground floor leisure space including a Turkish sauna, a separate reception room, and a study.

Set back from the road opposite Broomfield Park in Southgate with local shops nearby on The Green and easy access to public transport and local schools.

### Features

- Five Bedrooms
- Four Bathrooms
- Off-Street Parking
- Utility Room with Laundry
- Shoot
- Three Reception Rooms
- Study

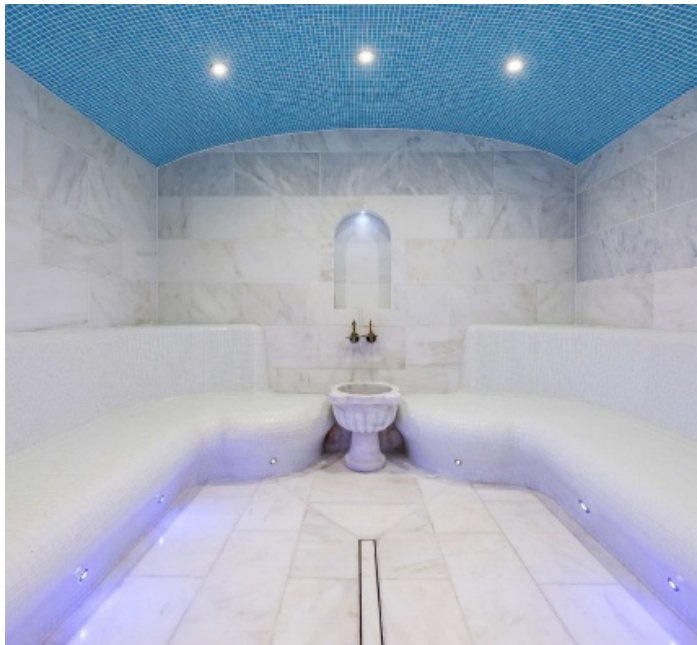


## Powys Lane, N14

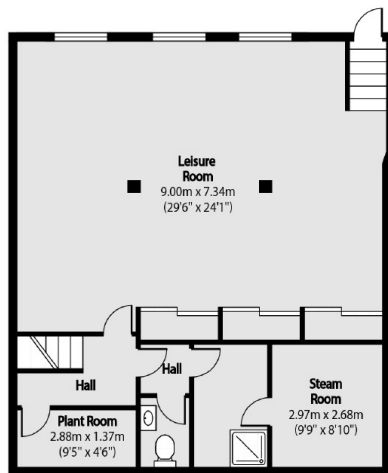
The entrance hall incorporates a traditional tessellated tiled flooring leading to a front reception room with feature fireplace, and a further living space at the rear comprised of a large kitchen with modern integrated appliances and a family room leading out to a well-presented garden as well as study, utility room and WC.

The property offers entertaining space in abundance with a staircase that leads down to large reception/leisure room with the rare added benefit of a Turkish sauna. This floor also houses a shower room, WC and the plant room.

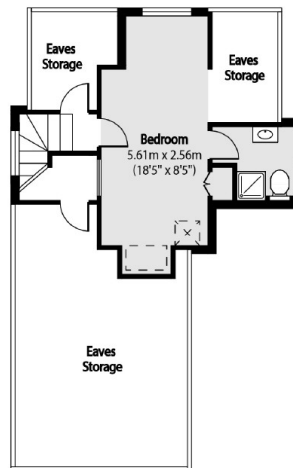
On the first floor there are three double bedrooms which share the family bathroom featuring a laundry shoot into the utility room and a principal bedroom with an en-suite bathroom. On the second floor is another good-sized double bedroom with an en-suite shower room.



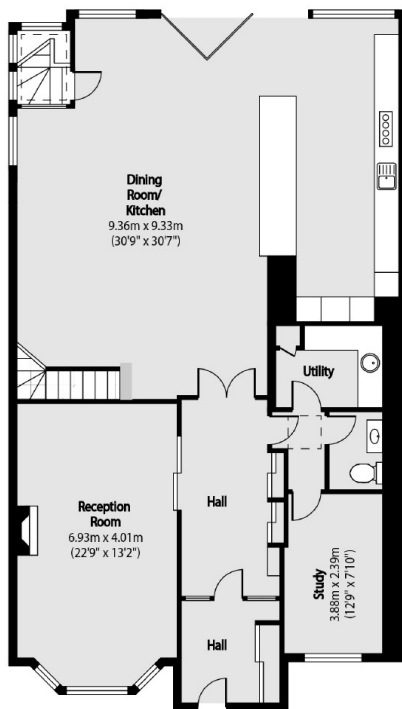
# Powys Lane, London, N14



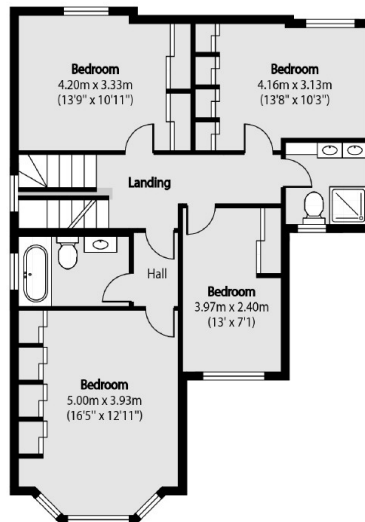
Lower Ground Floor



Second Floor



Ground Floor



First Floor

Total area (approx): 337.24 sq m (3630 sq. ft)

Eaves Storage total area (approx): 32.29 sq m (348 sq. ft)