



Hertford Road, N2

£1,200,000

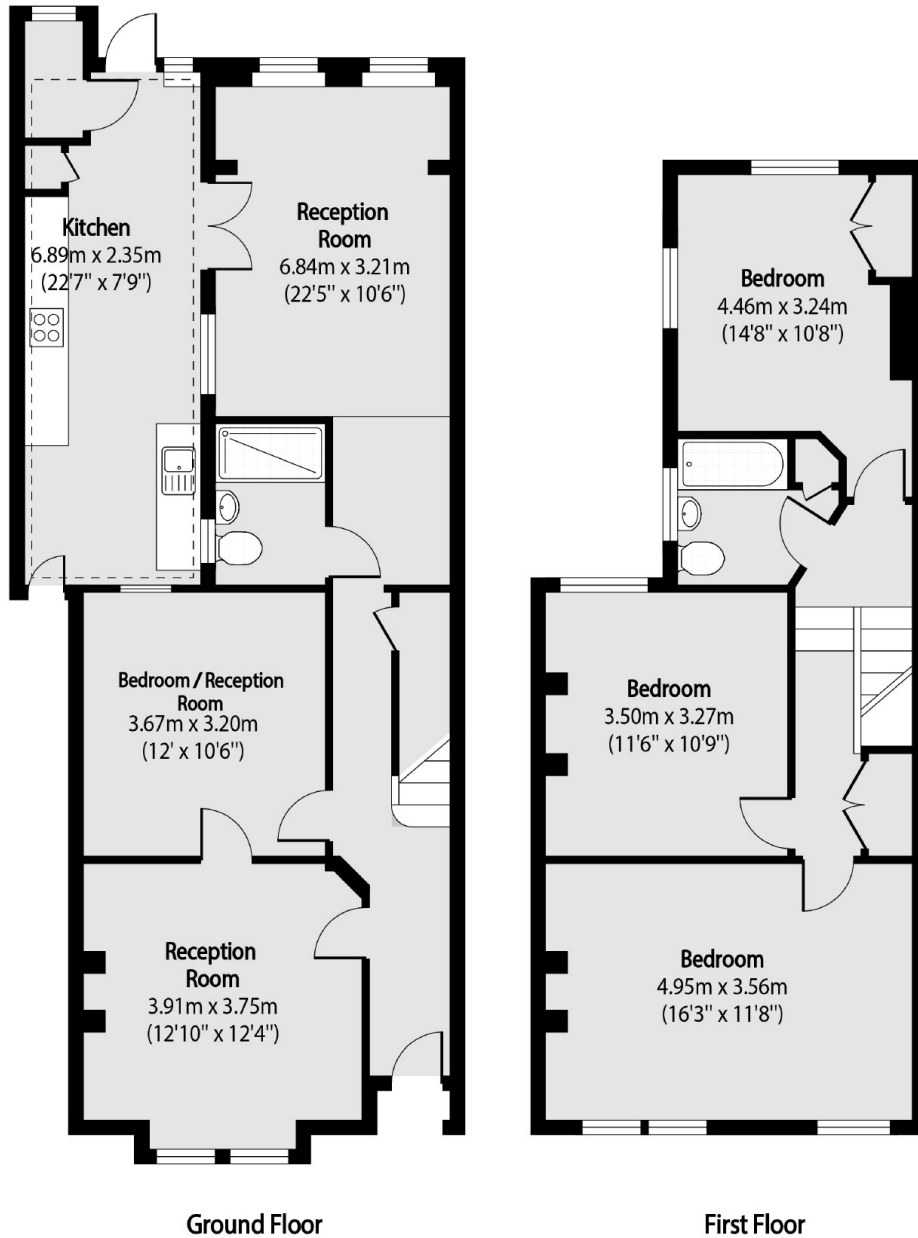
This three/four double bedroom period built, semi-detached family home has been extended to create a larger kitchen and dining space which has become the hub of the house. The property is presented in good condition with two bathrooms, modern decor and offered on a chain free basis.

Ideally situated within walking distance to the abundant of local shops and restaurants of the High Road and within a short walk to East Finchley Tube Station (Northern Line). The house is also situated with reach of some of the best schools in North London.

Features

- Three/Four Double Bedrooms
- Two Bathrooms
- Semi-Detached
- Extended to Rear
- Double Glazed
- Potential for Loft Conversion

Hertford Road, London, N2



Total area (approx): 131.20 sq m (1412 sq. ft)

Shed Total area (approx): 5.51 sq m (59 sq. ft)