



Sutton Road, N10

£795,000

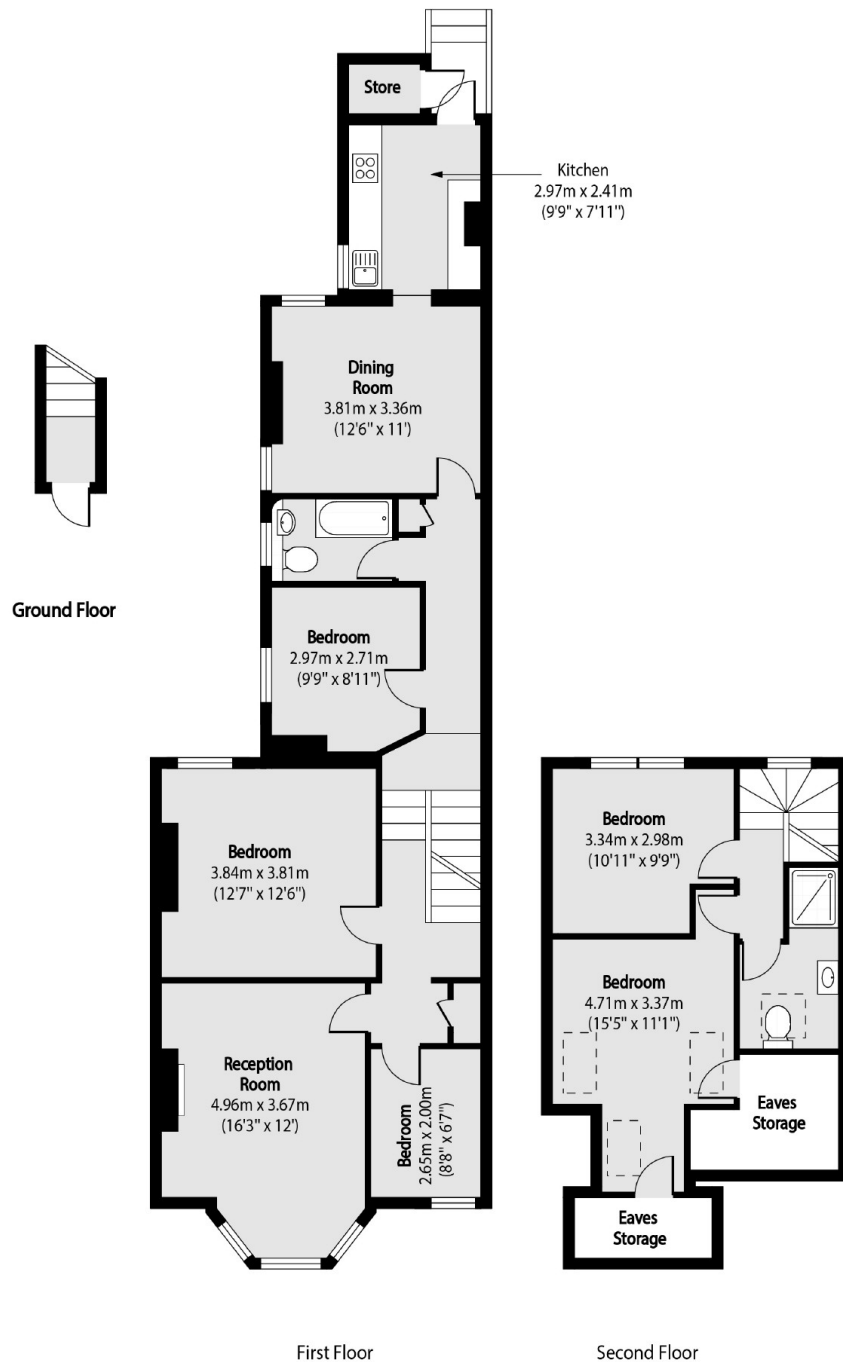
A well finished, first and second floor duplex flat situated within an Edwardian house. This property offers four/five bedrooms, two bathrooms. The flat also boasts an abundance of period features including high ceilings and sash windows, as well as direct access to a charming rear garden.

Sutton Road is situated within catchment area for outstanding local schools such as Fortismere and Coldfall. This quiet residential street is a short walk from the famous Muswell Hill Broadway, which consists of an array of local restaurants, shops and amenities.

Features

- Four to Five Bedrooms
- Split Level
- Edwardian Purpose Built
- High Ceilings
- Two Bathrooms
- Private Garden

Sutton Road, London, N10



Total area (approx): 121.62 sq m (1309 sq. ft)
(Excluding Eaves Storage)

Store total area (approx): 1.17 sq m (13 sq. ft)