

## Lincoln Road, N2

£950,000

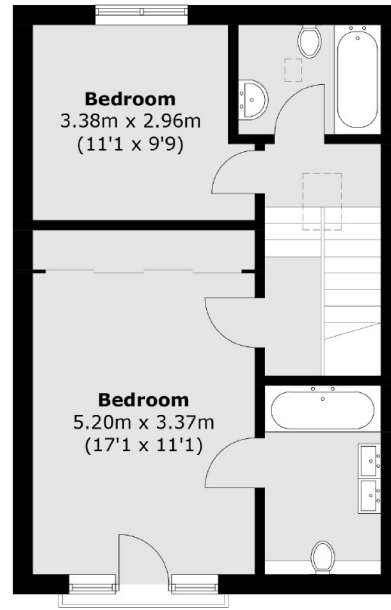
Dexters are pleased to offer this four double-bedroom townhouse arranged over three floors of living space and offered on a chain free basis. This attractive house boasts a family bathroom, two en-suites, a guest WC and off-street parking.

Lincoln Road is conveniently located just moments from the extensive facilities of the High Road, East Finchley Northern Line underground station and the open spaces of Cherry Tree Wood.

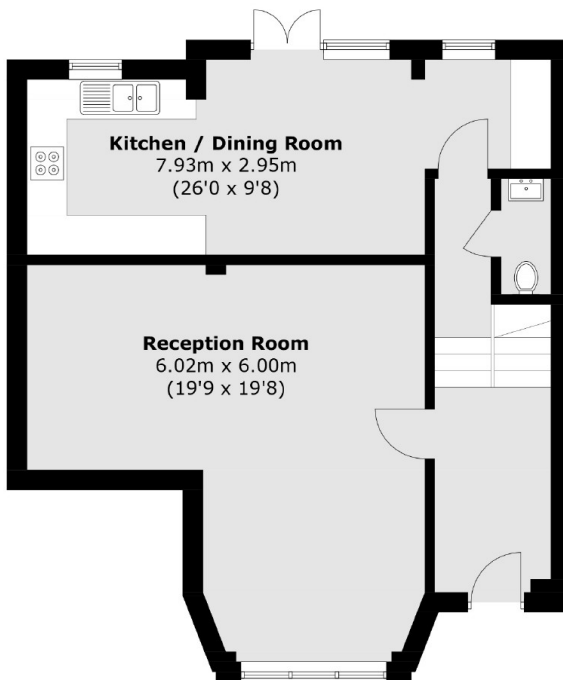
### Features

- Four Double Bedrooms
- Three Bathrooms
- Off-Street Parking
- Chain Free
- Juliet Balcony
- Patio Garden

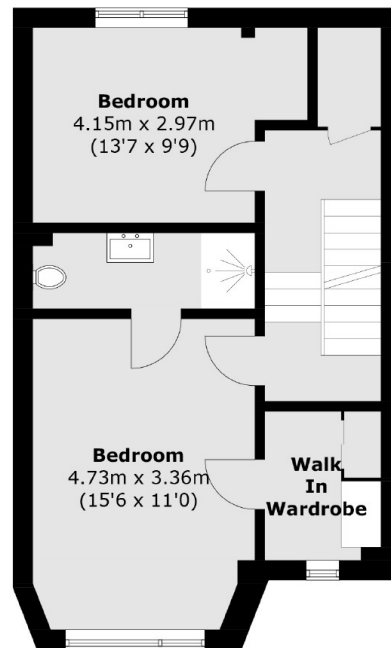
# Lincoln Road, London, N2



**Second Floor**



**Ground Floor**



**First Floor**

Total area (approx.): 150.2 sq. m (1,616.7 sq. ft)