



## Connaught Gardens, N10

£599,999

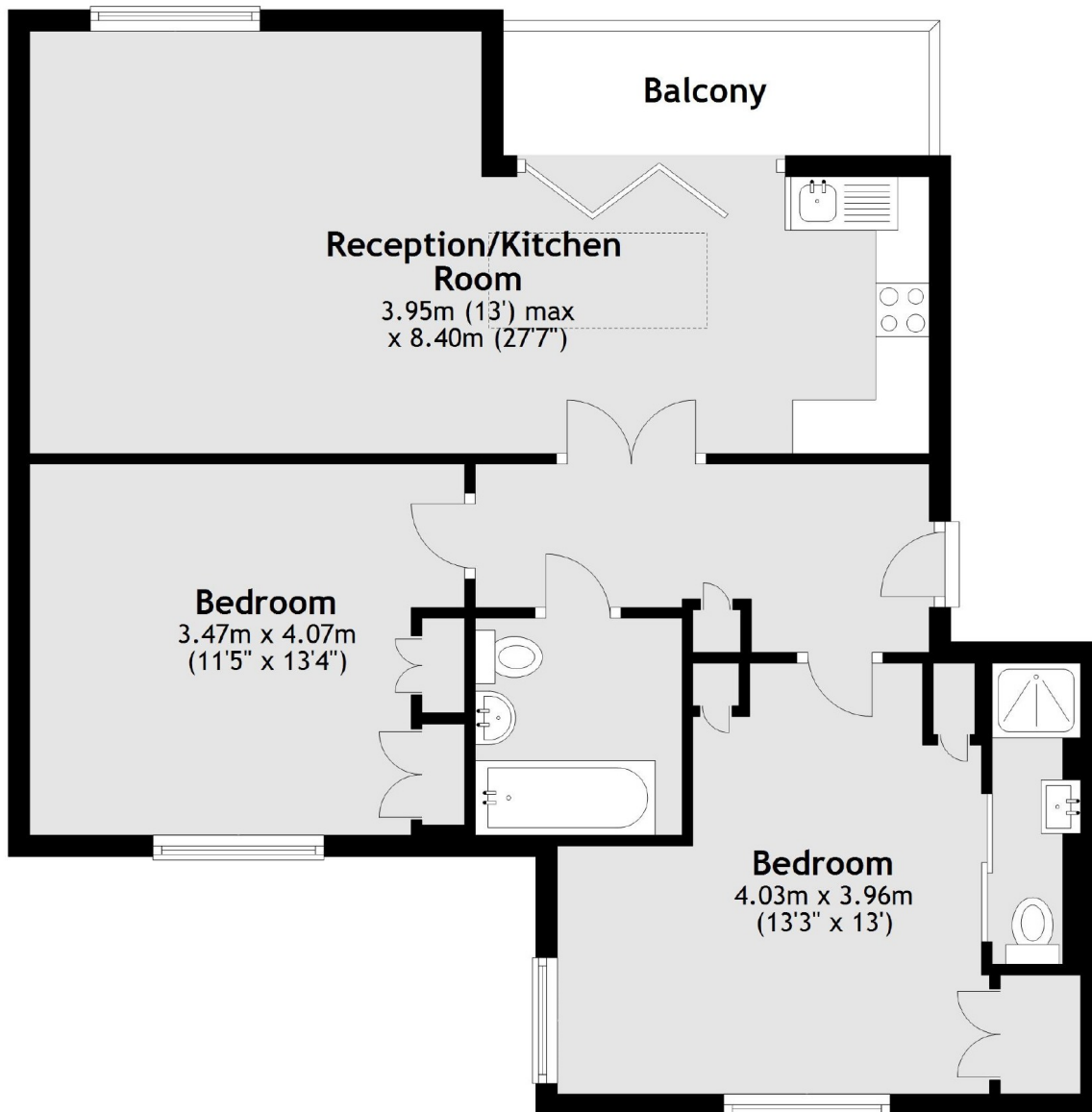
A modern build two double bedroom top floor flat with two bathrooms, bright and airy open plan living space showcasing a roof terrace off the lounge area with panoramic views over London's skyline.

Muswell Hill sits on top of one of the capital's highest hills - on a clear day, views across the city are breath taking. A village-like community it has a delightful array of individual shops, restaurants, boutiques and green spaces along with Highgate station near by.

### Features

- Two Bedrooms
- Roof Terrace
- Two Bathrooms
- Top Floor Flat
- Open Plan Living
- New Build Development

# Connaught Gardens, London, N10



**Main area: Approx. 71.6 sq. metres (771.0 sq. feet)**  
Plus balconies, approx. 5.1 sq. metres (55.3 sq. feet)