

## Lincoln Road, N2

£950,000

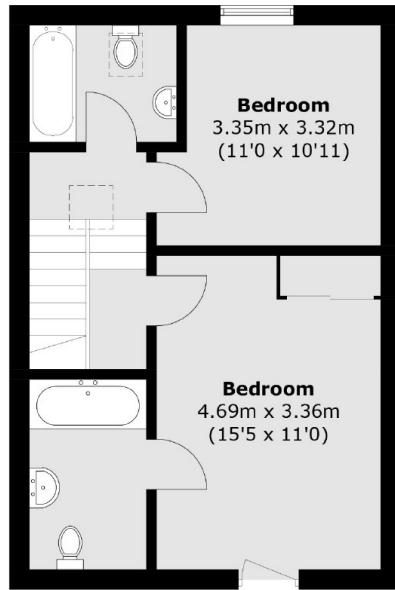
Dexters are pleased to offer this three double-bedroom townhouse spread over three floors of living space and offered on a chain free basis. Benefiting from two family bathrooms (one en suite), a guest WC, off-street parking and a garage with potential for conversion.

Lincoln Road is conveniently located just moments from the extensive facilities of the High Road, East Finchley Northern Line underground station and the open spaces of Cherry Tree Wood.

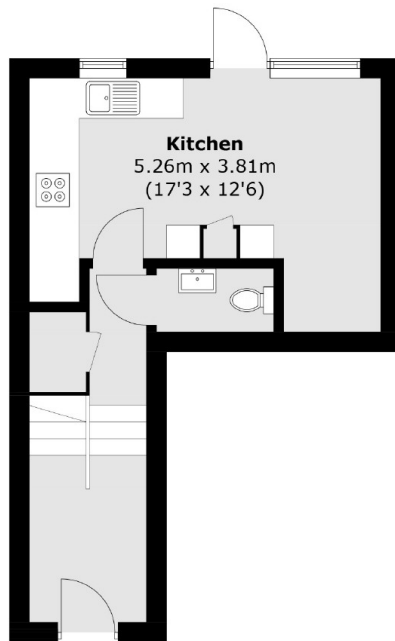
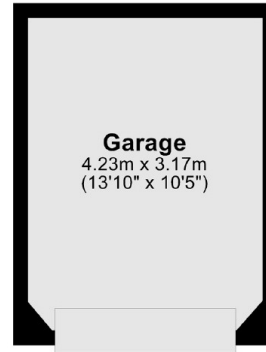
### Features

- Three Double Bedrooms
- Two Bathrooms
- Garage
- Chain Free
- Juliet Balcony
- Patio Garden

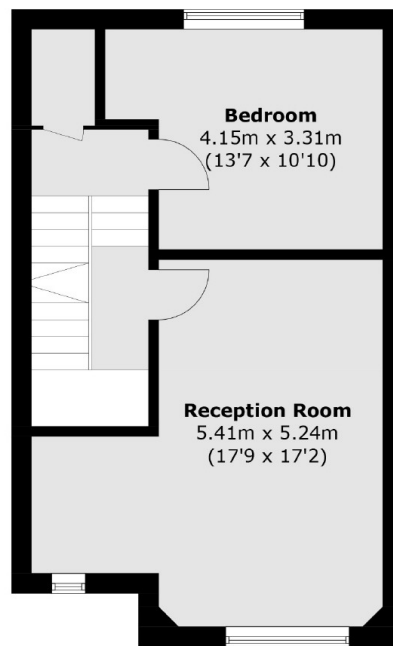
# Lincoln Road, London, N2



**Second Floor**



**Ground Floor**



**First Floor**

Total area (approx.): 116.2 sq. m (1,250.7 sq. ft)  
Garage Total area: approx. 13.4 sq. metres (144.4 sq. feet)