



Sydney Road, N10

£475,000

This family sized flat split over two floors with two double bedrooms and two reception areas is situated in a modern purpose built block with access to a communal garden. This property is being sold chain free.

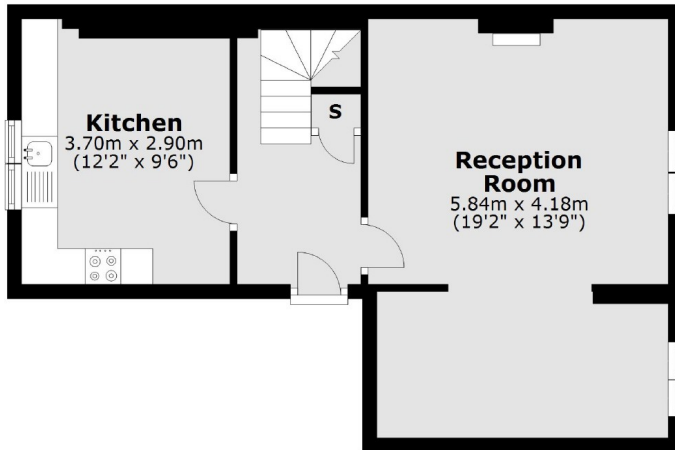
The property is situated in a peaceful residential area, close to the shops and amenities on Colney Hatch Lane and within easy reach of the more extensive amenities on Muswell Hill Broadway.

Features

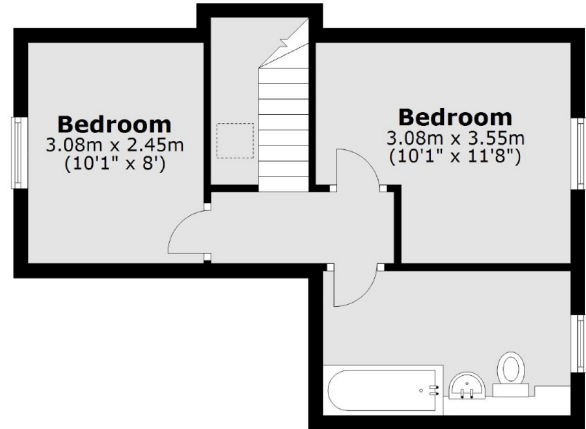
- Two Bedrooms
- Split Level
- Chain Free
- Two Receptions
- Communal Gardens
- Leasehold

Sydney Road, London, N10

Second Floor



Third Floor



Total area: approx. 73.1 sq. metres (786.9 sq. feet)