

# HUNTERS<sup>®</sup>

HERE TO GET *you* THERE



## 1 Thrawl Street

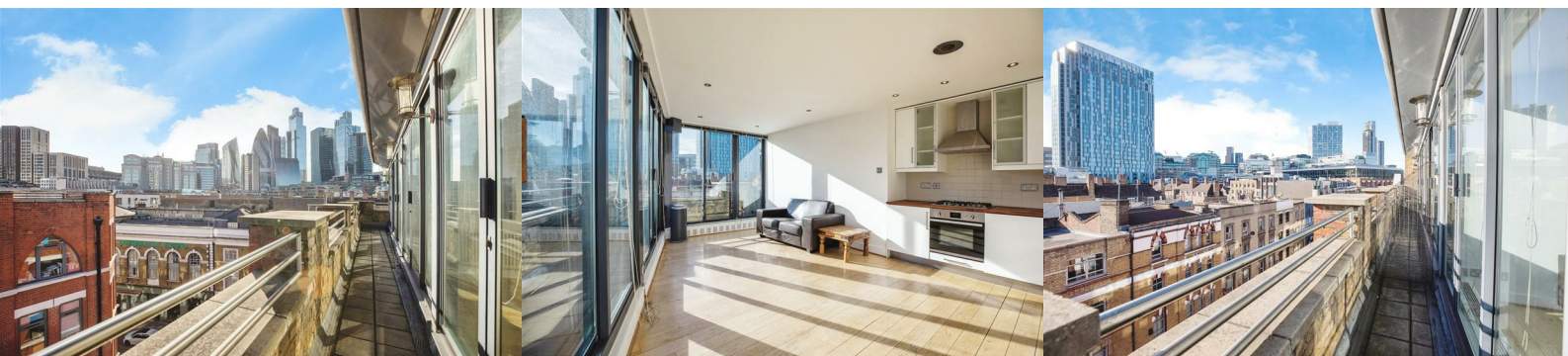
London, E1 6RW

£3,000 Per Calendar Month

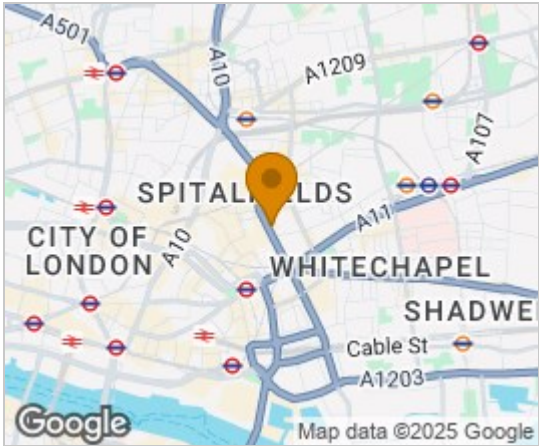


A remarkable 1-bedroom penthouse apartment that captures the essence of city living. As you ascend to this top-floor sanctuary, the first thing that will strike you is the sheer opulence of space and light. The floor-to-ceiling windows frame breathtaking panoramic views of the city, creating a backdrop that's nothing short of mesmerizing. Whether it's the daytime skyline or the sparkling city lights at night, every moment spent here is an enchanting experience. Step out onto your private terrace, a tranquil oasis high above the bustling city below. With this exclusive outdoor space, you'll relish the opportunity to savor your morning coffee while soaking in the sunrise or unwind under the stars with a glass of wine, taking in the dazzling urban landscape. The bedroom, a retreat in itself, provides both comfort and privacy. The elegant design and large windows allow you to wake up to the stunning city views, creating a unique ambiance that's hard to replicate.

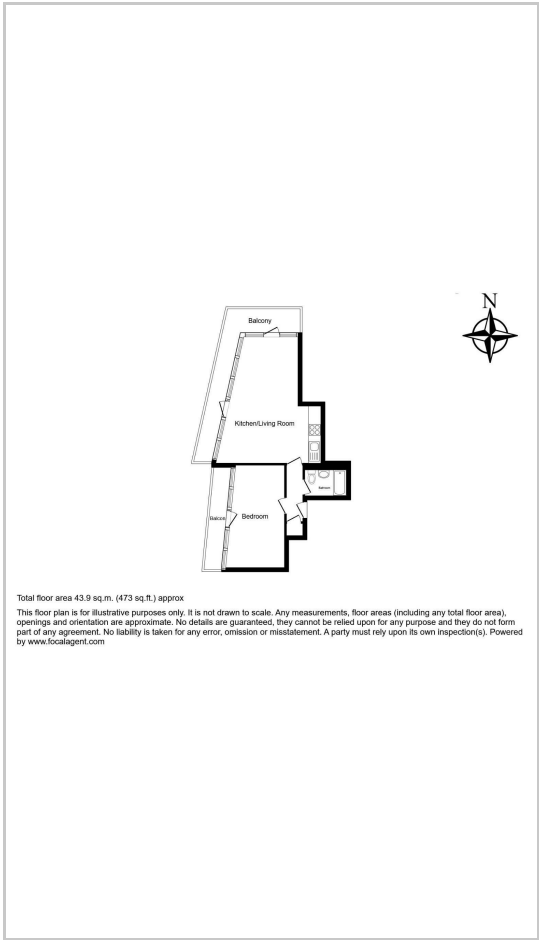
Saxon House is perfectly positioned in one of London's most vibrant neighborhoods, offering easy access to iconic destinations like Shoreditch, Brick Lane, and Spitalfields, renowned for their cultural diversity, dining options, and bustling nightlife. When it comes to transportation, you'll find Aldgate East and Liverpool Street stations nearby, allowing you to effortlessly navigate London's extensive network of trains and buses.



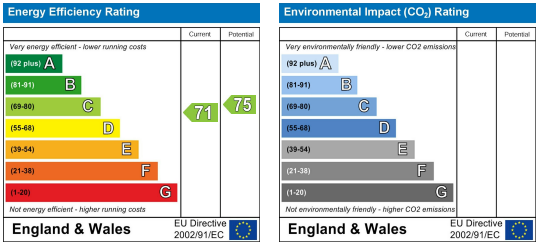
Area Map



Floor Plans



Energy Efficiency Graph



These particulars are intended to give a fair and reliable description of the property but no responsibility for any inaccuracy or error can be accepted and do not constitute an offer or contract. We have not tested any services or appliances (including central heating if fitted) referred to in these particulars and the purchasers are advised to satisfy themselves as to the working order and condition. If a property is unoccupied at any time there may be reconnection charges for any switched off/disconnected or drained services or appliances - All measurements are approximate.

**THINKING OF SELLING?** If you are thinking of selling your home or just curious to discover the value of your property, Hunters would be pleased to provide free, no obligation sales and marketing advice. Even if your home is outside the area covered by our local offices we can arrange a Market Appraisal through our national network of Hunters estate agents.