



HUNTERS[®]
HERE TO GET *you* THERE



Sylvester Path, Hackney Central, E8

£550,000



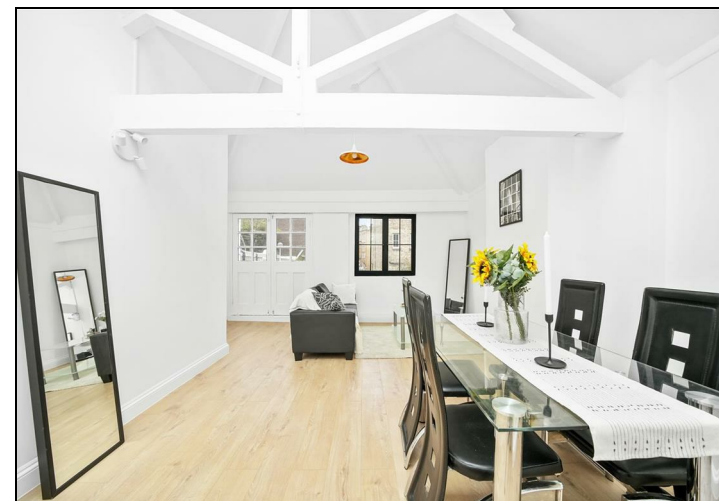
A beautifully refurbished two-bedroom apartment, finished to an exceptional standard and offering a perfect blend of character and contemporary style. The property features a brand-new, modern bathroom, a sleek fully fitted kitchen, and elegant wooden flooring throughout. Soaring double-height ceilings, exposed beams, and striking skylights flood the space with natural light, creating a bright and airy atmosphere.

Set on the first floor of a charming converted warehouse, the apartment is nestled on a quiet, cobbled, pedestrianised residential street. Offered chain-free with a brand new 999-year lease.

Sylvester Path boasts an enviable location just moments from the vibrant London Fields, Broadway Market, and the iconic Hackney Empire. Excellent transport links are nearby, with Hackney Downs and Hackney Central Overground stations both within easy walking distance, providing swift access into the City.

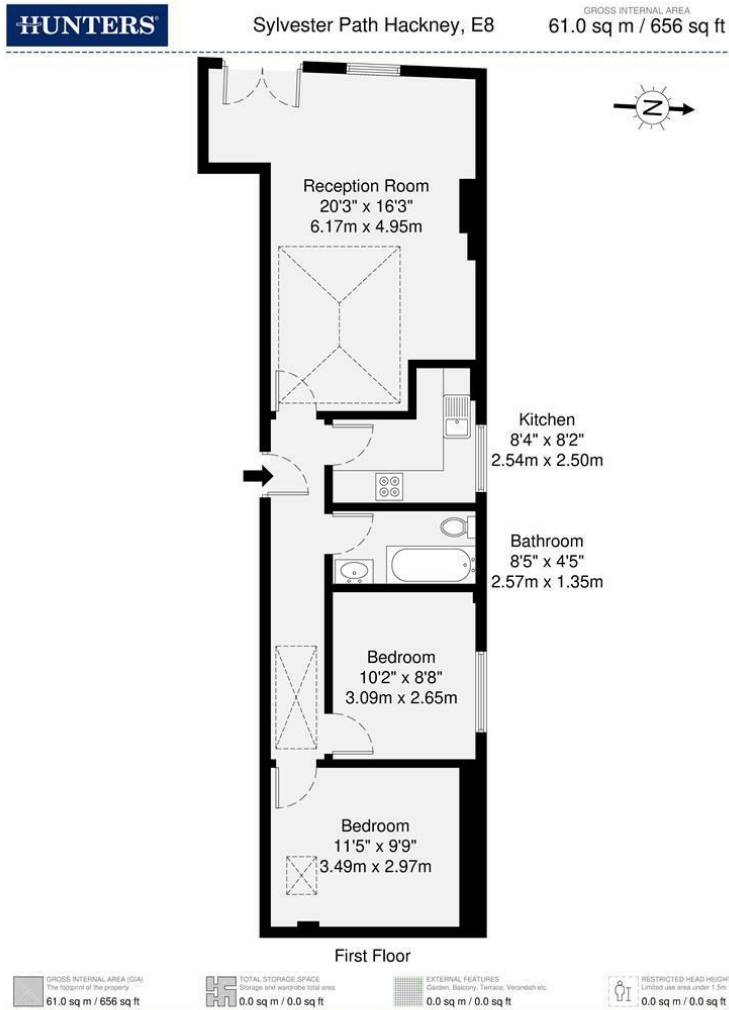
KEY FEATURES

- 2 Bedroom Apartment
- Original Warehouse Features
 - Striking Sky Lights
 - Newly Refurbished
 - 999 Year lease
- Cobbled Residential Street



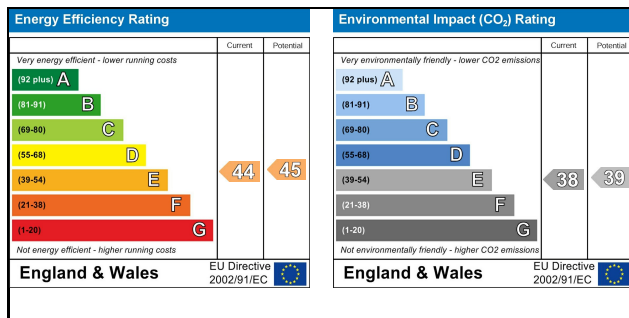
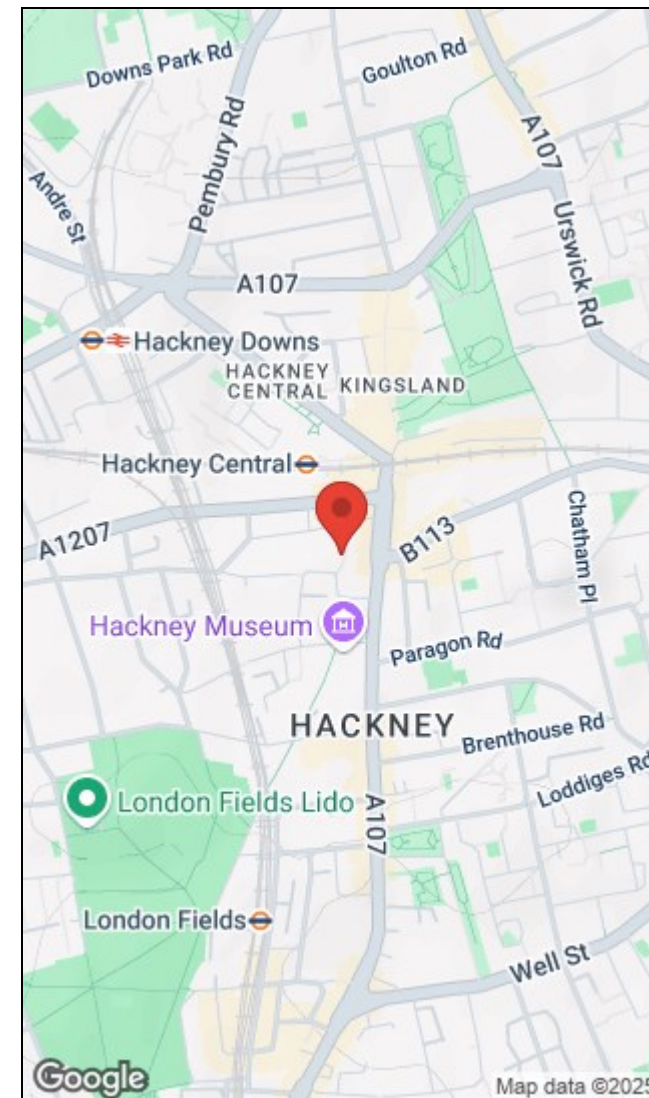






Disclaimer: Floorplan measurements are approximate and are for illustrative purposes only. While we do not doubt the floorplan accuracy and completeness, you or your advisors should conduct a careful, independent investigation of the property in respect of monetary valuation.

Maison
VUE



110 Curtain Road, London, EC2A 3AH | 020 7613 1798
shoreditchlettings@hunters.com | www.hunters.com



This Hunters business is independently owned and operated by PR Alliance Ltd | Registered Address: 110 Curtain Road, London, EC2A 3AH | Registered Number: 6242984 England and Wales | VAT No: 918 7157 96 with the written consent of Hunters Franchising Limited.