

HUNTERS®

HERE TO GET *you* THERE



Timber Yard

Drysdale Street, N1 6ND

£2,600 Per Month



Hunters are proud to present this 900 Sq ft. one double bedroom apartment in the Terence Conran designed Timberyard, enviably located just off Hoxton Square.

Comprising of a spacious open plan lounge with fully integrated kitchen and island, an exceptionally spacious double bedroom and a contemporary bathroom with shower over bath.

Further benefits include poured resin floors (which highlight Terence Conran's industrial design), high ceilings, recessed lights, floor to ceiling windows, an oversized hallway and available to let unfurnished.

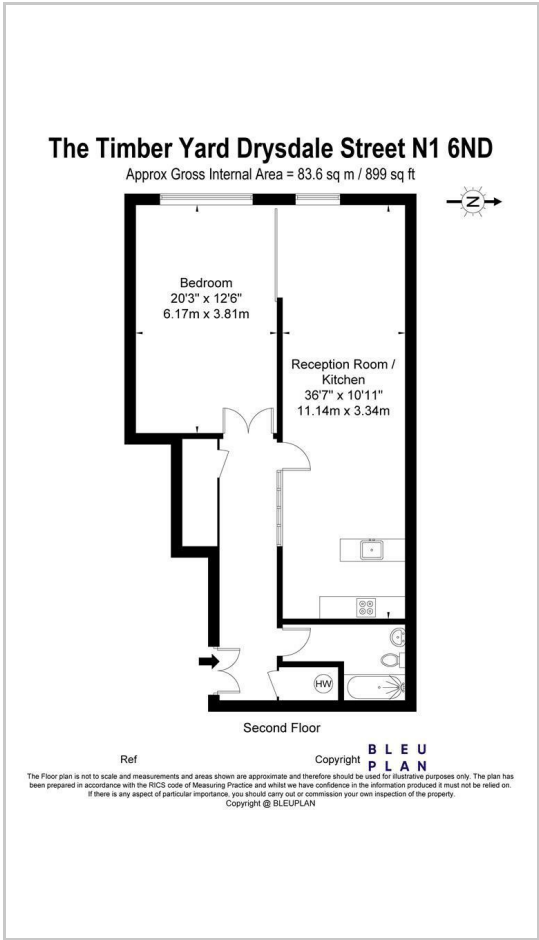
The Timberyard is a gated development on the shoulders of the City, near Shoreditch and Hoxton Square, with exclusive bars, restaurants, and retail units.



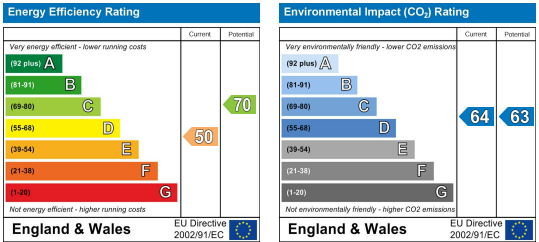
Area Map



Floor Plans



Energy Efficiency Graph



These particulars are intended to give a fair and reliable description of the property but no responsibility for any inaccuracy or error can be accepted and do not constitute an offer or contract. We have not tested any services or appliances (including central heating if fitted) referred to in these particulars and the purchasers are advised to satisfy themselves as to the working order and condition. If a property is unoccupied at any time there may be reconnection charges for any switched off/disconnected or drained services or appliances - All measurements are approximate.

THINKING OF SELLING? If you are thinking of selling your home or just curious to discover the value of your property, Hunters would be pleased to provide free, no obligation sales and marketing advice. Even if your home is outside the area covered by our local offices we can arrange a Market Appraisal through our national network of Hunters estate agents.