



North Circular Road, , Enfield, N13 5EL

- Three Bedrooms
- Extended kitchen / Diner
- Through Lounge
- Two Bathrooms
- 1930s Terrace House
- Rear garden
- Double Glazing
- Chain Free

£500,000



North Circular Road, , Enfield, N13 5EL

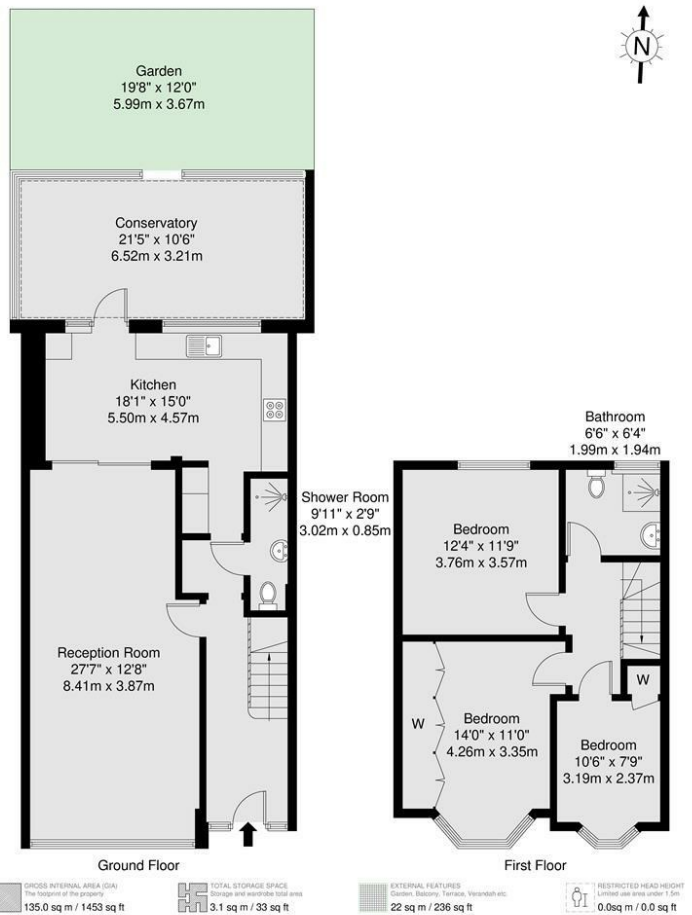
DESCRIPTION

A larger than average 3-bedroom 1930s terrace house which benefits from a bright and spacious through lounge, an extended kitchen diner, 2 bathrooms and 3 good sized bedrooms. Further benefiting from rear access and being sold chain free.

Located in a sought-after residential area, this property is within easy reach of Palmers Green's shops, restaurants, W6 bus routes, and mainline station with connections to Moorgate. The nearby A10 and A406 also offer excellent road links into London and beyond.







Disclaimer: Floorplan measurements are approximate and are for illustrative purposes only. While we do not doubt the floorplan accuracy and completeness, you or your advisors should conduct a careful, independent investigation of the property in respect of monetary valuation.

Maison VUE

Viewings

Please contact shoreditch@hunters.com, if you wish to arrange a viewing appointment for this property or require further information.

Valuations

For a valuation of your property, please email the team with your property details, contact information and the times you are available.

ENERGY PERFORMANCE CERTIFICATE

The energy efficiency rating is a measure of the overall efficacy of a home. The higher the rating the more energy efficient the home is and the lower the fuel bills will be.

Energy Efficiency Rating		Current	Potential
Very energy efficient - lower running costs			
(92 plus) A			
(81-91) B			
(69-80) C			
(55-68) D			
(39-54) E			
(21-38) F			
(1-20) G			
Not energy efficient - higher running costs			
England & Wales		EU Directive 2002/91/EC	

These particulars are intended to give a fair and reliable description of the property but no responsibility for any inaccuracy or error can be accepted and do not constitute an offer or contract. We have not tested any services or appliances (including central heating if fitted) referred to in these particulars and the purchasers are advised to satisfy themselves as to the working order and condition. If a property is unoccupied at any time there may be reconnection charges for any switched off/disconnected or drained services or appliances - All measurements are approximate.

THINKING OF SELLING? If you are thinking of selling your home or just curious to discover the value of your property, Hunters would be pleased to provide free, no obligation sales and marketing advice. Even if your home is outside the area covered by our local offices we can arrange a Market Appraisal through our national network of Hunters estate agents.