

HUNTERS®

HERE TO GET *you* THERE



Hoxton Square

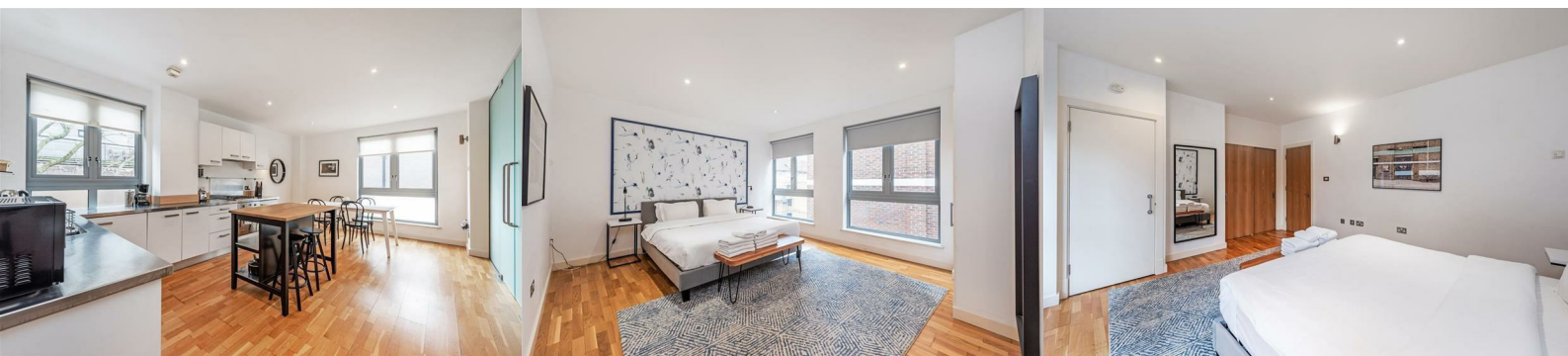
London, N1 6NU

£3,500 Per Calendar Month

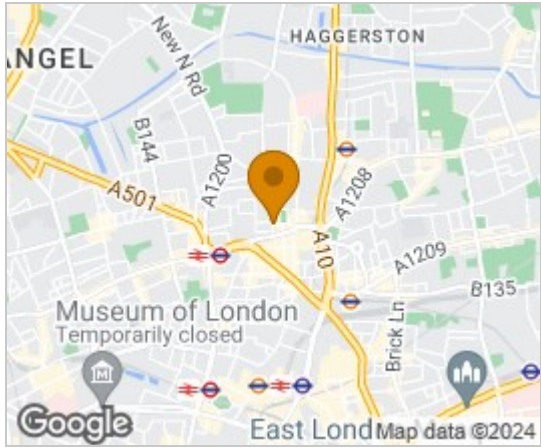


A stunning 2 bedroom apartment set on the second floor of a modern purpose built development in the heart of trendy Hoxton Square. Offering almost 900 sq ft of modern internal living space the property comprises of 2 double bedrooms, a large kitchen/diner, separate lounge and a luxury tiled bathroom.

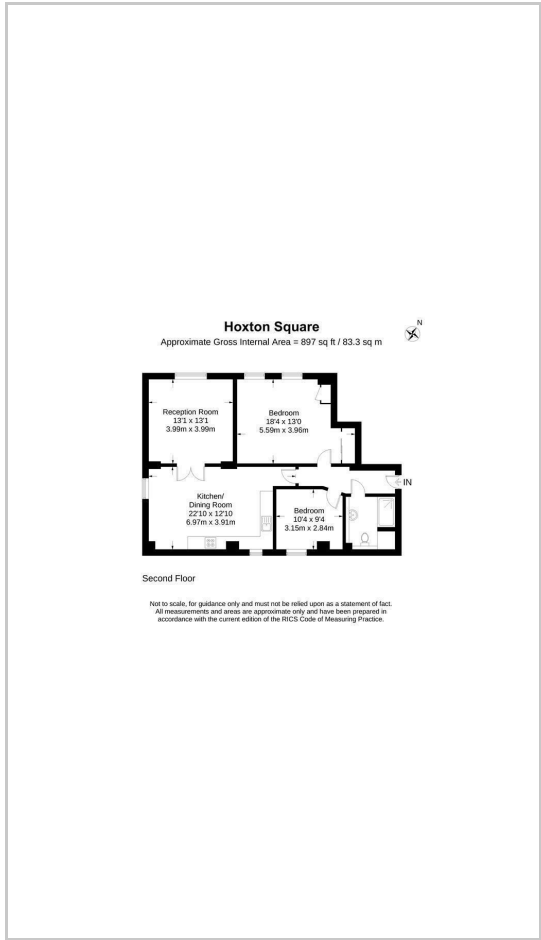
Hoxton Square is one of London's most fashionable areas and is peppered with quality restaurants, bars, fashion boutiques, art galleries and coffee shops. The closest station is Old Street (Northern Line, British Rail) while Liverpool Street Station (Elizabeth line, Hammersmith & City, Circle, Metropolitan and Central lines & British Rail) is also nearby.



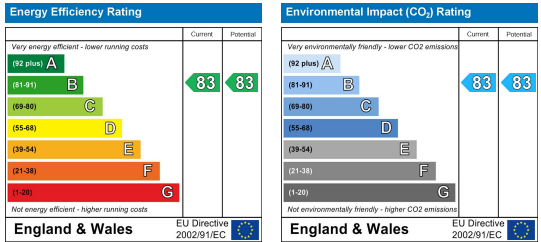
Area Map



Floor Plans



Energy Efficiency Graph



These particulars are intended to give a fair and reliable description of the property but no responsibility for any inaccuracy or error can be accepted and do not constitute an offer or contract. We have not tested any services or appliances (including central heating if fitted) referred to in these particulars and the purchasers are advised to satisfy themselves as to the working order and condition. If a property is unoccupied at any time there may be reconnection charges for any switched off/disconnected or drained services or appliances - All measurements are approximate. **THINKING OF SELLING?** If you are thinking of selling your home or just curious to discover the value of your property, Hunters would be pleased to provide free, no obligation sales and marketing advice. Even if your home is outside the area covered by our local offices we can arrange a Market Appraisal through our national network of Hunters estate agents.