



2 Principal Place, Worship Street, , London, EC2A 2FA

- 2 Bedroom Penthouse Apartment
- 45th Floor
- Breath-taking Views
- 10 Year NHBC Warranty
- Principal Tower
- 3 Private Terrace's
- Unrivalled Amenities

£3,335,000



2 Principal Place, Worship Street, , London, EC2A 2FA - £3,335,000

DESCRIPTION

Experience the pinnacle of urban living in this extraordinary 2-bedroom, 2-bathroom penthouse, perched high on the 45th floor of the highly coveted Principal Tower. With unrivalled views of London's iconic skyline and a level of luxury that is truly unparalleled, this property represents a once-in-a-lifetime opportunity for discerning buyers.

The penthouse is a masterpiece of modern design, featuring sleek lines, premium finishes, and an open-concept layout that maximizes space and light. High-quality materials and contemporary aesthetics create a sense of refined luxury throughout.

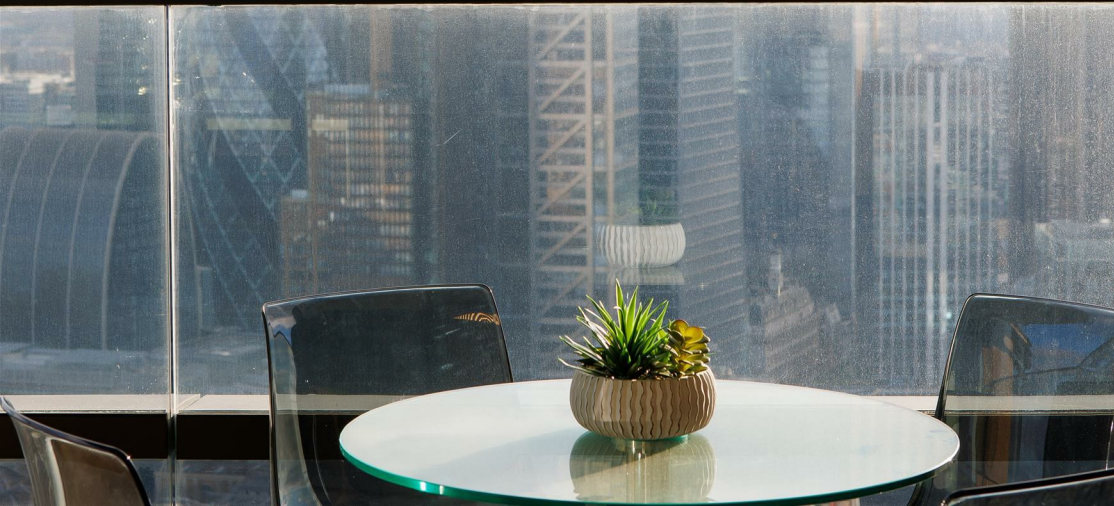
Step out onto your private terrace, a tranquil oasis above the bustling city, where you can unwind, dine, or entertain while soaking in the breath-taking views.

Residents of Principal Tower enjoy access to a wealth of amenities, including a 24-hour concierge, fitness centre, cinema room, spa, and a residents' lounge.

Located in the heart of London's financial district, Principal Tower offers unparalleled convenience. The best of the city, from world-class dining to cultural attractions, is at your doorstep.

This penthouse at Principal Tower is more than just a home; it's a statement of opulence and sophistication. If you're seeking a property that defines luxury living in London, this is your opportunity. Contact us today to schedule a private viewing and make this exceptional penthouse your own.

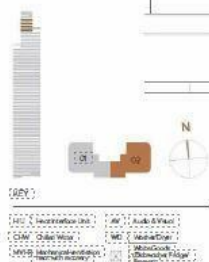
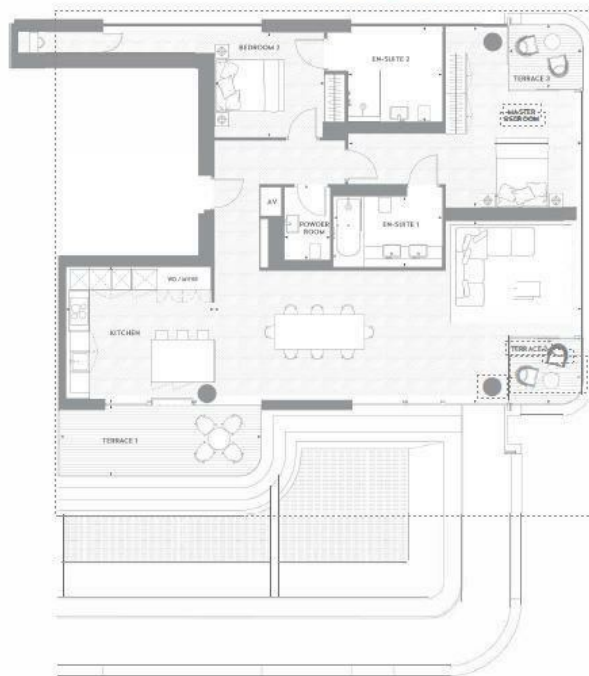




APARTMENT 02

2 BEDROOM PENTHOUSE
FLOORS 4 & 4F

APARTMENT	154m ² / 1,662sq ft	Living/dining/kitchen	14.86 x 5.22m / 48'9" x 17'2"	Powder Room	5.79 x 2.04m / 18'10" x 6'8"
TERRACES	181m ² / 1,959sq ft	Master Bedroom	6.76 x 5.25m / 22'2" x 17'2"	Terrace 1	5.55 x 5.55m / 18'3" x 18'3"
		En-suite 1	3.14 x 2.00m / 10'2" x 6'6"	Terrace 2	3.08 x 1.99m / 10'1" x 6'5"
		Bedroom 2	3.18 x 3.06m / 10'5" x 9'10"	Terrace 3	2.08 x 1.99m / 7'0" x 6'5"
		En-suite 2	2.71 x 2.27m / 8'10" x 7'5"		



Viewings

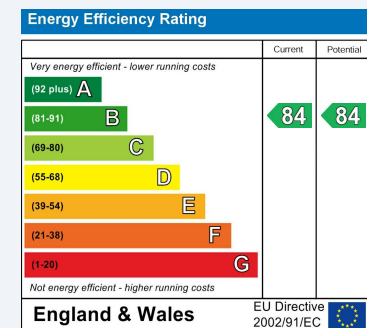
Please contact shoreditch@hunters.com, if you wish to arrange a viewing appointment for this property or require further information.

Valuations

For a valuation of your property, please email the team with your property details, contact information and the times you are available.

ENERGY PERFORMANCE CERTIFICATE

The energy efficiency rating is a measure of the overall efficacy of a home. The higher the rating the more energy efficient the home is and the lower the fuel bills will be.



These particulars are intended to give a fair and reliable description of the property but no responsibility for any inaccuracy or error can be accepted and do not constitute an offer or contract. We have not tested any services or appliances (including central heating if fitted) referred to in these particulars and the purchasers are advised to satisfy themselves as to the working order and condition. If a property is unoccupied at any time there may be reconnection charges for any switched off/disconnected or drained services or appliances - All measurements are approximate.

THINKING OF SELLING? If you are thinking of selling your home or just curious to discover the value of your property, Hunters would be pleased to provide free, no obligation sales and marketing advice. Even if your home is outside the area covered by our local offices we can arrange a Market Appraisal through our national network of Hunters estate agents.

