



WentWorth
Estate Agents



'Dunbar' College Road, Bath, BA1 5RU

- Detached Family Home • Desirable Location on Private Road • Five Double Bedrooms & Four Bathrooms • Large Kitchen Dining Room • Separate Utility Room • Living Room with Bath Stone Fireplace • Self Contained One Bedroom Annexe • Gated Parking for Several Cars • Wrap Around Gardens • EPC Rating - D

Price guide £2,000,000

Location

College Road sits in an enviable position on the northern slopes of Bath giving direct access into the heart of the World Heritage City of Bath. There are two outstanding private schools a stones throw away as well as nearby sporting facilities including the Racecourse, Lansdown Golf Club and Lansdown Tennis/Squash Club. Bath itself enjoys international acclaim for its Georgian architecture and Roman heritage and offers a wide variety of cultural, leisure and business amenities along with excellent restaurants and shops. Junction 18 of the M4 is 9 miles north and Bristol around 12 miles west. Bath Spa station has a mainline link to London Paddington (journey time approx 90 mins) and Bristol Temple Meads (journey time approx 15 mins). Bristol International Airport offers an increasing range of domestic and international routes and is about 20 miles to the west.

Internal Description

'Dunbar' is a stunning family home built in 1980/81, the current owners completed a major renovation on this property in 2018/19. Once inside the home you are greeted by a light filled hallway with stairs to the first floor and plenty of room for storage. The generously sized living room sits to the left with a large picture window overlooking the front garden. A lovely fireplace brings character to the room with a beautiful bath stone surround. Bedroom four can be found to the rear of the living room, a good sized double overlooking the rear lawn. This is serviced by a downstairs shower room. Ample in size, it consists of a corner shower unit, WC, sink unit and towel rail. The current owners have transformed the former garage into bedroom five, which is now a successful holiday let studio annexe complete with its own private entrance, parking, kitchenette and shower room. This room can also be accessed directly from the living room for family guests, and has a feature drop down king size bed giving the room excellent flexibility.

To the right of the entrance hall is a wonderful open plan family space. Floor to ceiling windows bring the outside in with both patio doors and a barn style door to the side. There is space for a large dining table making it the perfect social area come summer or winter thanks to the modern gas fire. The kitchen itself has plenty of worktop space and storage with modern integrated appliances. These include a five ring induction hob, 'AEG' double ovens and tall fridge. Plumbing for a dishwasher sits under double sinks overlooking the front gardens. There is a well located utility room a few steps from the kitchen with 300 litre water tank and wall mounted gas central heating boiler, along with good storage and clothes drying space.

To the first floor you will find three further double bedrooms and a family bathroom. The master is generous in size and benefits from a walk-in wardrobe, bespoke built in wardrobes as well as a newly installed air conditioning and a modern en-suite shower room. The en-suite itself has a large glass shower cubicle with rain shower, WC, sink and tiled. There is also a generous loft space easily accessible from the master bedroom. Bedrooms two and three are again doubles in size and have dormer windows offering wonderful views overlooking the front garden. The family bathroom upstairs is located at the end of the first floor landing with a shower, WC and basin.

External Description

The current owners have significantly upgraded the external space of the plot during their time here. Notably adding African hardwood electric gates for privacy as well as two carports, one with electric car charging point. The gravelled driveway allows further parking for several more cars if required. The primarily flat garden wraps around the property giving the feel of space and seclusion. The plot is mainly laid to lawn and includes a patio area for summer dining, two useful sheds, and is surrounded by mature shrubs, laurel hedges and dry stone walls or fencing on all sides.

Agents Note

The Property Misdescriptions Act 1991. The Agent has not tested any apparatus, equipment, fixtures and fittings or services and so cannot verify that they are in working order or fit for the purpose. A Buyer must obtain verification from their Legal Advisor or Surveyor. Stated measurements are approximate and any floor plans for guidance only. References to the tenure of a property are based on information supplied by the Seller. The Agent has not had sight of the title documents and a Buyer must obtain verification from their Legal Advisor.

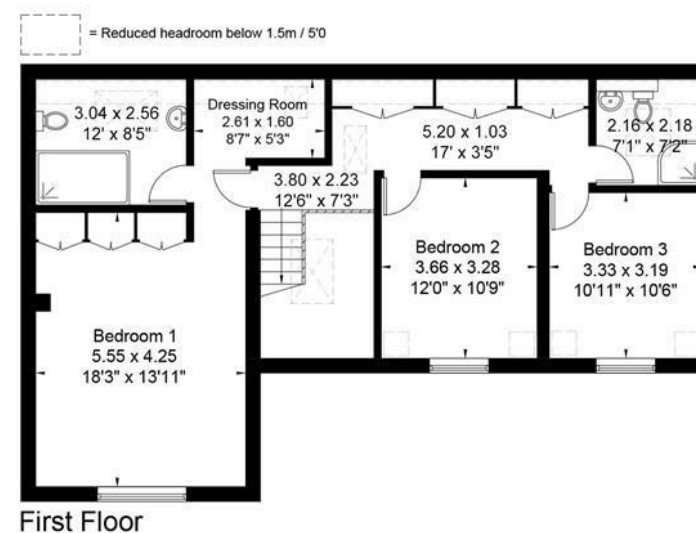
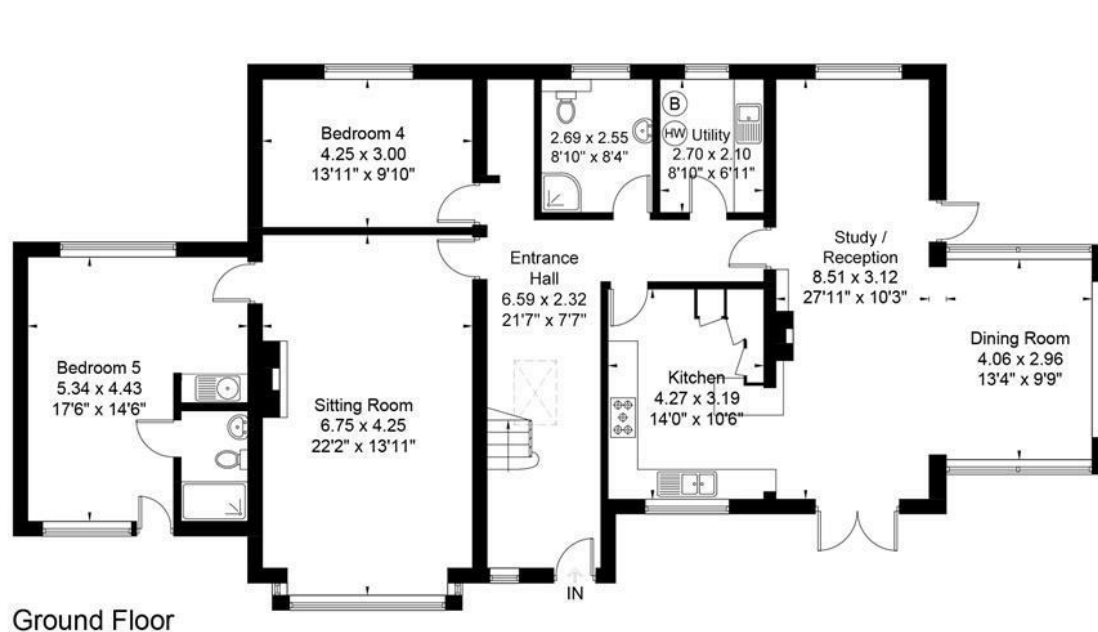
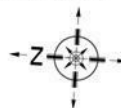
Additional Notes

Tenure - Freehold
Council Tax Band - G

NB: This information has been provided to us by the seller . We would always still advise you to do your own due diligence .

Dunbar, College Road, Bath, BA1 5RU

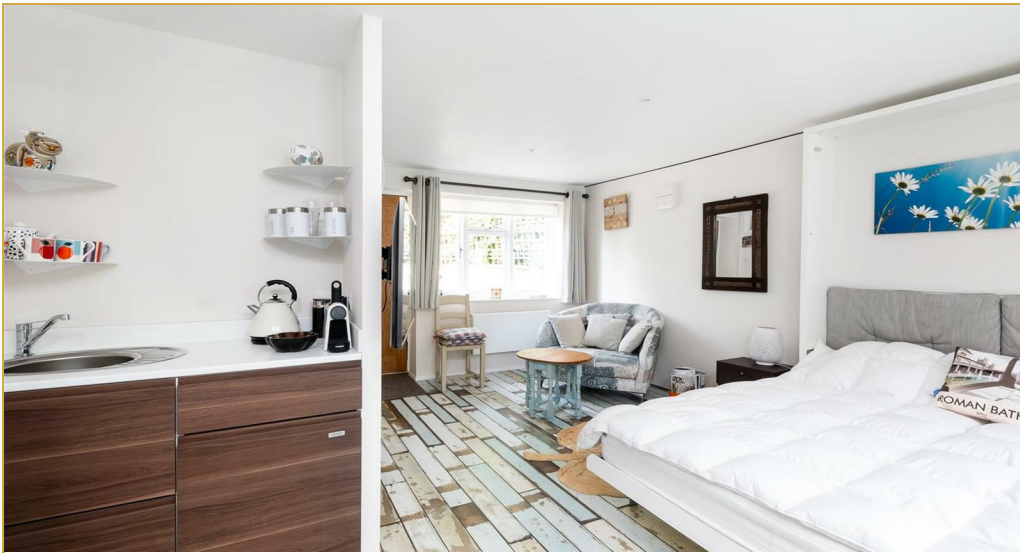
Approximate Gross Internal Area = 252.2 sq m / 2714 sq ft



Energy Efficiency Rating		
	Current	Potential
Very energy efficient - lower running costs		
(92 plus) A		
(81-91) B		82
(69-80) C		
(55-68) D	63	
(39-54) E		
(21-38) F		
(1-20) G		
Not energy efficient - higher running costs		
England & Wales	EU Directive 2002/91/EC	

These plans are prepared in accordance with the guidelines as set out by the RICS Code of Measuring Practice. Whilst every attempt has been made to ensure accuracy, all measurements should be treated as approximate and as such are for illustrative purposes only. Not to Scale. Photography | Drone | Video Tours | Floor Plans | Energy Performance Certificates | Design | Print | www.roomcpm.com | © Room - Creative Property Marketing Ltd 2024





Wentworth Estate Agents

25 Monmouth Street, Bath, BA1 2AP
01225 904904

bath@wentworthea.com

www.wentworthea.com

Important Notice 1. Particulars: These particulars are not an offer or contract, nor part of one. You should not rely on statements by Wentworth Estate Agents in the particulars or by word of mouth or in writing ("information") as being factually accurate about the property, its condition or its value. Neither Wentworth Estate Agents nor any joint agent has any authority to make any representations about the property, and accordingly any information given is entirely without responsibility on the part of the agents, seller(s) or lessor(s). 2. Photos etc: The photographs show only certain parts of the property as they appeared at the time they were taken. Areas, measurements and distances given are approximate only. 3.Regulations etc: Any reference to alterations to, or use of, any part of the property does not mean that any necessary planning, building regulations or other consent has been obtained. A buyer or lessee must find out by inspection or in other ways that these matters have been properly dealt with and that all information is correct.

