



Astley Close, Woodrow, Redditch B98 7TZ

£150,000

3 1 1



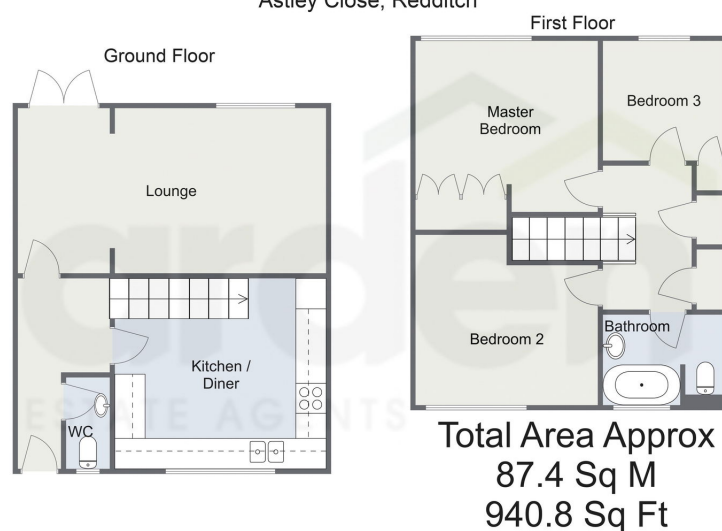
- Three Bedrooms
- Family Bathroom & Guest WC
- Lounge
- Kitchen/Diner
- Enclosed Rear Garden
- Communal Parking
- Popular Location
- No Onward Chain



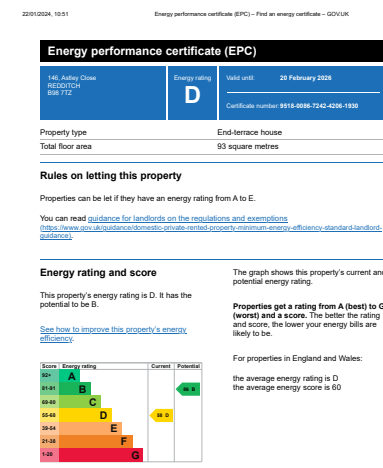
A deceptively spacious three bedroom end of terrace property, being sold with no upward chain, offered with kitchen/diner, lounge, family bathroom and guest WC, enclosed rear garden, communal parking and situated in the popular location of Woodrow, Redditch.



Astley Close, Redditch



For illustrative purposes only. Decorative finishes, fixtures & fittings do not represent the current state of the property. Measurements are approximate & not to scale. Floor Plans made using RoomSketcher.



<https://find-energy-certificate.service.gov.uk/energy-certificates/22010204-1051-0888-7242-4206-1930/print-house>

1/4

For more information on this house or to arrange a viewing please call the office on:

01527 540 654

Alternatively, you can scan the QR to view all of the details of this property online.



arden
ESTATE AGENTS