



Bromsgrove Road, Redditch B97 4NH

£550,000

4 2 3



Presenting a beautifully maintained three/four-bedroom detached property, boasting generously proportioned and adaptable living spaces, a delightful private rear garden, a driveway, and both adjoining and detached garages, ideally situated within walking distance to Pitcheroak Woods near Redditch Town Centre.

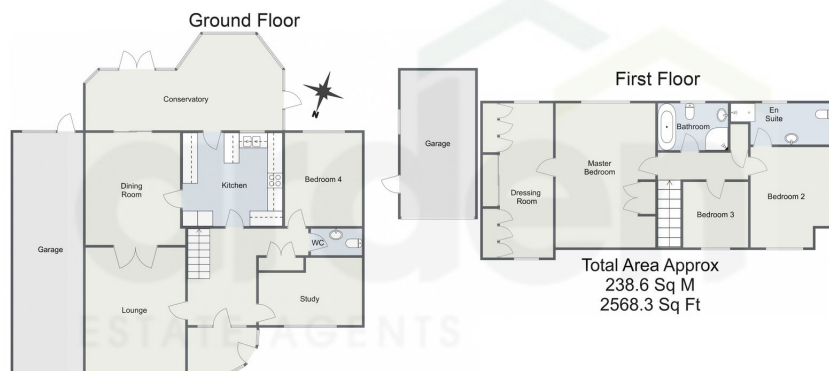
The ground floor of this property comprises an entrance porch leading to a hallway with built-in cloaks storage, a guest WC, a study, and a lounge featuring a feature fireplace and surround. Additionally, there is a separate dining room, a spacious kitchen equipped with a range of wall and base units, and a large conservatory offering views of the garden, accessible from both the dining room and kitchen. Completing the ground floor is an additional reception room/double bedroom. Moving to the first floor, you'll find the generously sized master bedroom with fitted wardrobes and an adjoining dressing room, complete with ample wardrobes and storage. There's also bedroom two, which benefits from an en-suite shower room, along with bedroom three and the principal bathroom, featuring a bath and separate shower enclosure.

The standout feature of this property is undoubtedly its delightful rear garden, meticulously maintained and designed for relaxation and enjoyment. It boasts a paved patio area with stepping stones leading to the lush lawn, which extends to additional paved and decked seating areas. Surrounding the garden are well-stocked planted beds, adding bursts of color and greenery throughout the seasons. The entire space is enclosed within fenced boundaries, providing privacy.

In addition to its other features, this property offers ample driveway parking, providing space for several cars arranged around a central plantation of beautiful shrubs, adding to its curb appeal. The driveway also provides access to an adjoining tandem double garage, conveniently accessed from the driveway. Furthermore, a gated side entrance allows access to the detached single garage located at the rear of the property.



Bromsgrove Road, Redditch



Total Area Approx
238.6 Sq M
2568.3 Sq Ft

For illustrative purposes only. Decorative finishes, fixtures & fittings do not represent the current state of the property. Measurements are approximate & not to scale. Floor Plans made using RoomSketcher.

- Beautifully Maintained Detached Property
- Lounge, Dining Room and Study
- Large Conservatory
- Principal Bathroom, En-Suite and Guest WC
- Delightful Private Rear Garden
- Three/ Four Bedrooms
- Spacious Kitchen
- Master Bedroom with Dressing Room
- Two Garages
- Ample Off Road Parking



Energy performance certificate (EPC)

325 Bromsgrove Road
REDDITCH
B97 4NH

Energy rating

D

Valid until:

21 May 2034

Certificate number:

3800-6296-0822-1325-3543

Property type

Detached house

Total floor area

161 square metres

Rules on letting this property

Properties can be let if they have an energy rating from A to E.

You can read [guidance for landlords on the regulations and exemptions](https://www.gov.uk/guidance/landlords-on-the-regulations-and-exemptions) (<https://www.gov.uk/guidance/landlords-on-the-regulations-and-exemptions>).

Energy rating and score

This property's energy rating is D. It has the potential to be C.

[See how to improve this property's energy efficiency.](#)

Score

Energy rating

92+

A

81-91

B

69-80

C

55-68

D

39-54

E

21-38

F

1-20

G

Current

Potential

← D

→ C

The graph shows this property's current and potential energy rating.

Properties get a rating from A (best) to G (worst) and a score. The better the rating and score, the lower your energy bills are likely to be.

For properties in England and Wales:
the average energy rating is D
the average energy score is 60

For more information on this house or to arrange a viewing please call the office on:

01527 540 654

Alternatively, you can scan the QR to view all of the details of this property online.



arden
ESTATE AGENTS