



Blythe Close, Crabbs Cross, Redditch B97 5JU

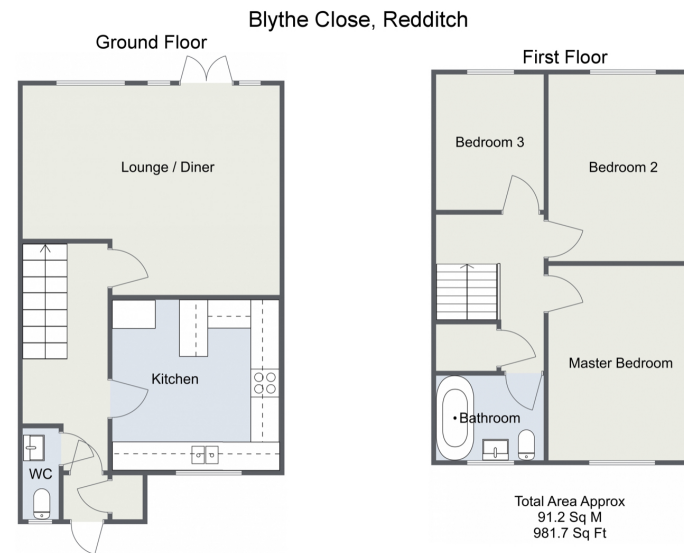
Offers Over £210,000

3 1 1



A neatly presented three bedroom mid terraced property offered with a family bathroom and guest cloakroom, good sized lounge/diner, enclosed rear garden, off road parking and situated in the popular location of Crabbs Cross, Redditch.





For illustrative purposes only. Decorative finishes, fixtures & fittings do not represent the current state of the property. Measurements are approximate & not to scale. Floor Plans made using RoomSketcher.



22092022_13:20 Energy performance certificate (EPC) - Find an energy certificate - GOV.UK

Energy performance certificate (EPC)		
2 Blythe Close REDDITCH WY5 5AU	Energy rating C	Valid until: 2 June 2032 Certificate number: 7801-8171-2222-2001-1623
Property type		Mid-terrace house
Total floor area		87 square metres

Rules on letting this property

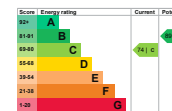
Properties can be rented if they have an energy rating from A to E.

If the property is rated F or G, it cannot be let, unless an exemption has been registered. You can read [guidance for landlords on the regulations and exemptions](https://www.gov.uk/guidance/energy-performance-certificate-exemptions) [here](https://www.gov.uk/guidance/energy-performance-certificate-exemptions).

Energy efficiency rating for this property

This property's current energy rating is C. It has the potential to be B.

[See how to improve this property's energy performance.](#)



The graph shows this property's current and potential energy efficiency.

Properties are given a rating from A (most efficient) to G (least efficient).

Properties are also given a score. The higher the number the lower your fuel bills are likely to be.

For properties in England and Wales:

the average energy rating is D
the average energy score is 60

<https://find-energiescertificates.service.gov.uk/energy-certificate/7001-8171-2222-2001-1623/summary>

1/4

For more information on this house or to arrange a viewing please call the office on:

01527 540 654

Alternatively, you can scan the QR to view all of the details of this property online.

