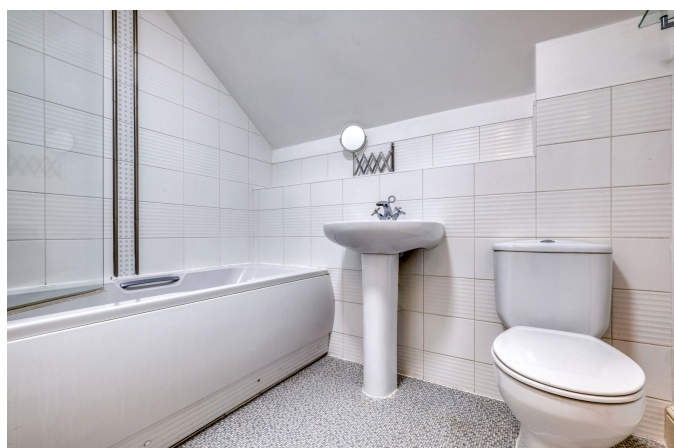


## Birchfield Road, Webheath Redditch B97 4LR

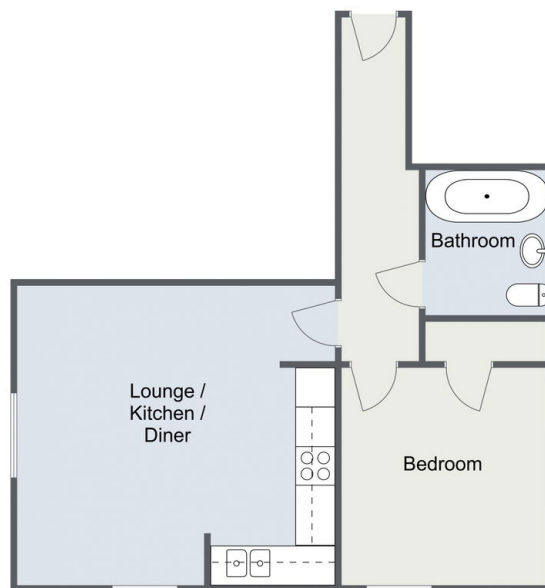
£130,000

1 1 1



- Top Floor
- Open Plan Kitchen/Living/Dining
- Allocated Parking
- No Onward Chain
- One Bedroom
- Bathroom
- Desirable Location
- Extended 99 Year Lease

Birchfield Road, Redditch



Total Area Approx  
45.2 Sq M  
486.5 Sq Ft

For illustrative purposes only. Decorative finishes, fixtures & fittings do not represent the current state of the property. Measurements are approximate & not to scale. Floor Plans made using RoomSketcher.

**Extended 99 Year Lease** Being sold with no upward chain, an excellent opportunity for a landlord investor or a first time buyer to purchase this neatly presented one bedroom top floor apartment offered with open plan kitchen/living, bathroom, double bedroom with built in wardrobes, allocated parking and situated in the desirable location of Webheath, Redditch.