

ON HOLD



Maple Road , Didcot
£300,000


MARTIN&CO

Maple Road , Didcot

£300,000

- Two bedrooms
- Lounge
- Fully fitted kitchen
- Downstairs cloakroom
- Family bathroom

A MODERN TWO BEDROOM MID TERRACED HOUSE located on a quiet side road on Great Western park. Great Western Park is one of the newest housing developments in Didcot. It has a range of facilities

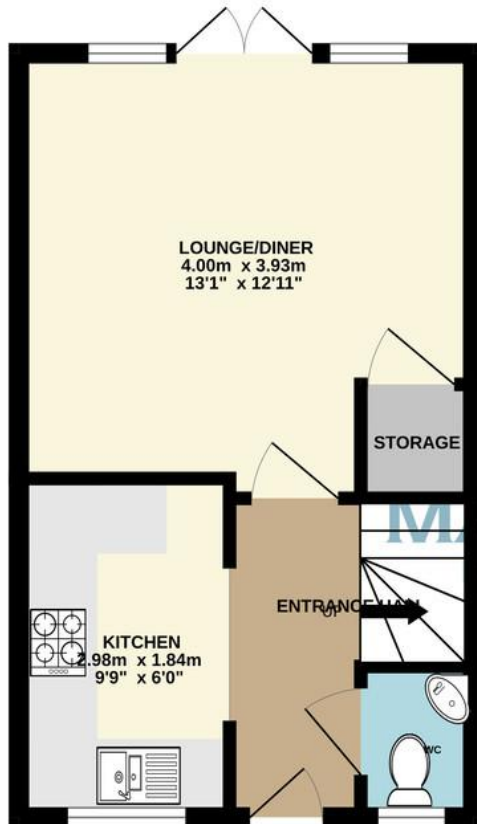




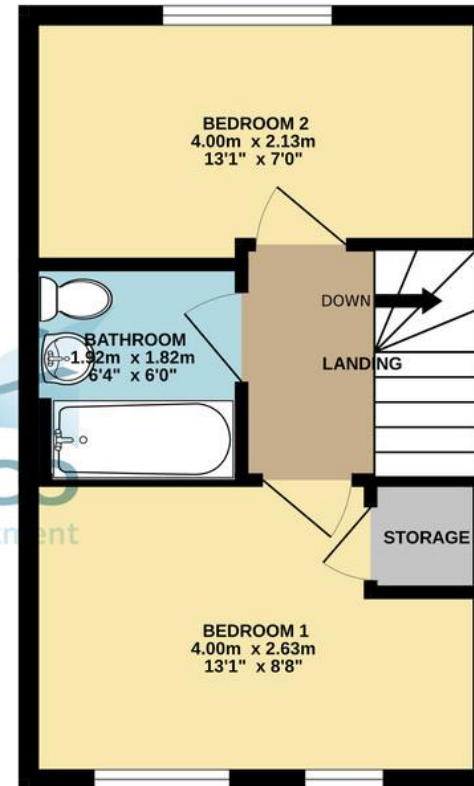
Energy Efficiency Rating

	Current	Potential
Very energy efficient - lower running costs		
(92-100) A		
(81-91) B		91
(69-80) C	77	
(55-68) D		

GROUND FLOOR
26.8 sq.m. (288 sq.ft.) approx.



1ST FLOOR
26.7 sq.m. (288 sq.ft.) approx.



Abingdon Office

10 West St Helen Street • Abingdon • OX14 5BL
T: 01235 524300 • E: abingdon@martinco.com

01235 524300

<http://www.martinco.com>

MARTIN&CO

Accuracy: References to the Tenure of a Property are based on information supplied by the Seller. The Agent has not had sight of the title documents. A Buyer is advised to obtain verification from their Solicitor. Items shown in photographs including but not limited to carpets, fixtures and fittings are not included unless specifically mentioned within the sales particulars. They may however be available by separate negotiation. Buyers must check the availability of any property and make an appointment to view before embarking on any journey to see a property. No person in the employment of the agent has any authority to make any representation about the property, and accordingly any information given is entirely without responsibility on the part of the agents, sellers(s) or lessors(s). Any property particulars are not an offer or contract, nor form part of one. **Sonic / Laser Tape:** Measurements taken using a sonic / laser tape measure may be subject to a small margin of error. **All Measurements:** All Measurements are Approximate. **Services Not tested:** The Agent has not tested any apparatus, equipment, fixtures and fittings or services and so cannot verify that they are in working order or fit for the purpose. A Buyer is advised to obtain verification from their Solicitor or Surveyor.