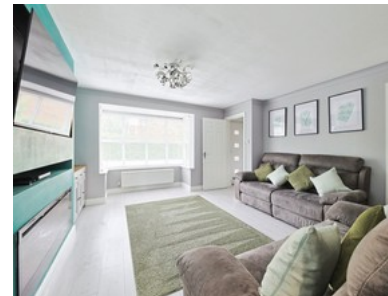


Beech Grove, Hessele

INVITING OFFERS BETWEEN £320,000 - £330,000



- Four Bedrooms, Perfect For Families
- South Facing Garden For Outdoor Enjoyment
- Ample Parking Space Available
- Spacious Lounge And Luxury Kitchen
- Conservatory For Extra Living Space
- Freehold
- Council Tax Band E
- Epc Rating D



Bedroom 4 Bathroom 2 Reception 2

Guide Price

£320,000