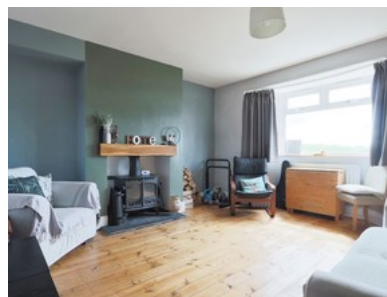
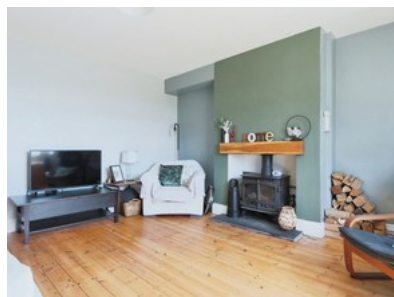


# Hill Dale Cottages, South Cave

## GUIDE PRICE £190,000



- Two-bedroom Mid Terrace Property
- Rural East Yorkshire Location Close To Main Roads
- Living Room With Log Burner And Wooden Flooring
- Front Garden And Larger, L-shaped Rear Garden
- Outside Storage Unit, Shed And Deck Area
- Freehold
- Council Tax Band B
- Epc Rating D



Bedroom 2 Bathroom 1 Reception 1

Guide Price

**£190,000**