

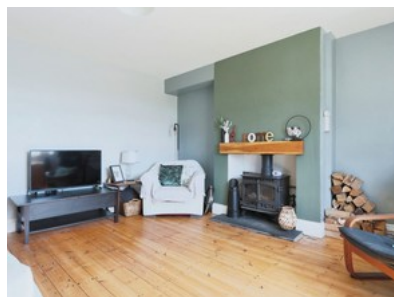
Hill Dale Cottages, South Cave

GUIDE PRICE £210,000

beercocks
valuing people, not just houses



- Two-bedroom Mid Terrace Property
- Rural East Yorkshire Location Close To Main Roads
- Living Room With Log Burner And Wooden Flooring
- Front Garden And Larger, L-shaped Rear Garden
- Outside Storage Unit, Shed And Deck Area
- Freehold
- Council Tax Band B
- Epc Rating D



Bedroom 2 Bathroom 1 Reception 1

Guide Price

£210,000