

Hotham Road South, Hull

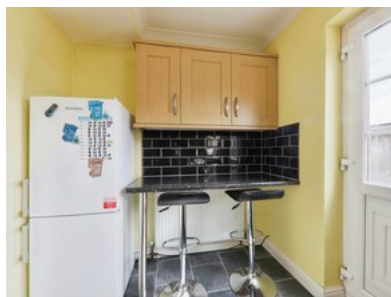
Guide Price £90,000 - £100,000



beercocks
valuing people, not just houses



- ✔ Located Just Off Willerby Road, Close To Excellent Amenities
- ✔ On The Outskirts Of West Hull, Near A Golf Course
- ✔ Realistic Price, Requires Cosmetic Updating, Ideal First Time Buyers Or Investors
- ✔ Two-bedroom Traditional End Town House
- ✔ Parking For Two Cars, Detached Garage And South-facing Garden
- ✔ Freehold
- ✔ Council Tax Band A
- ✔ Epc E



Bedroom  2 Bathroom  1 Reception  1

Guide Price

£90,000