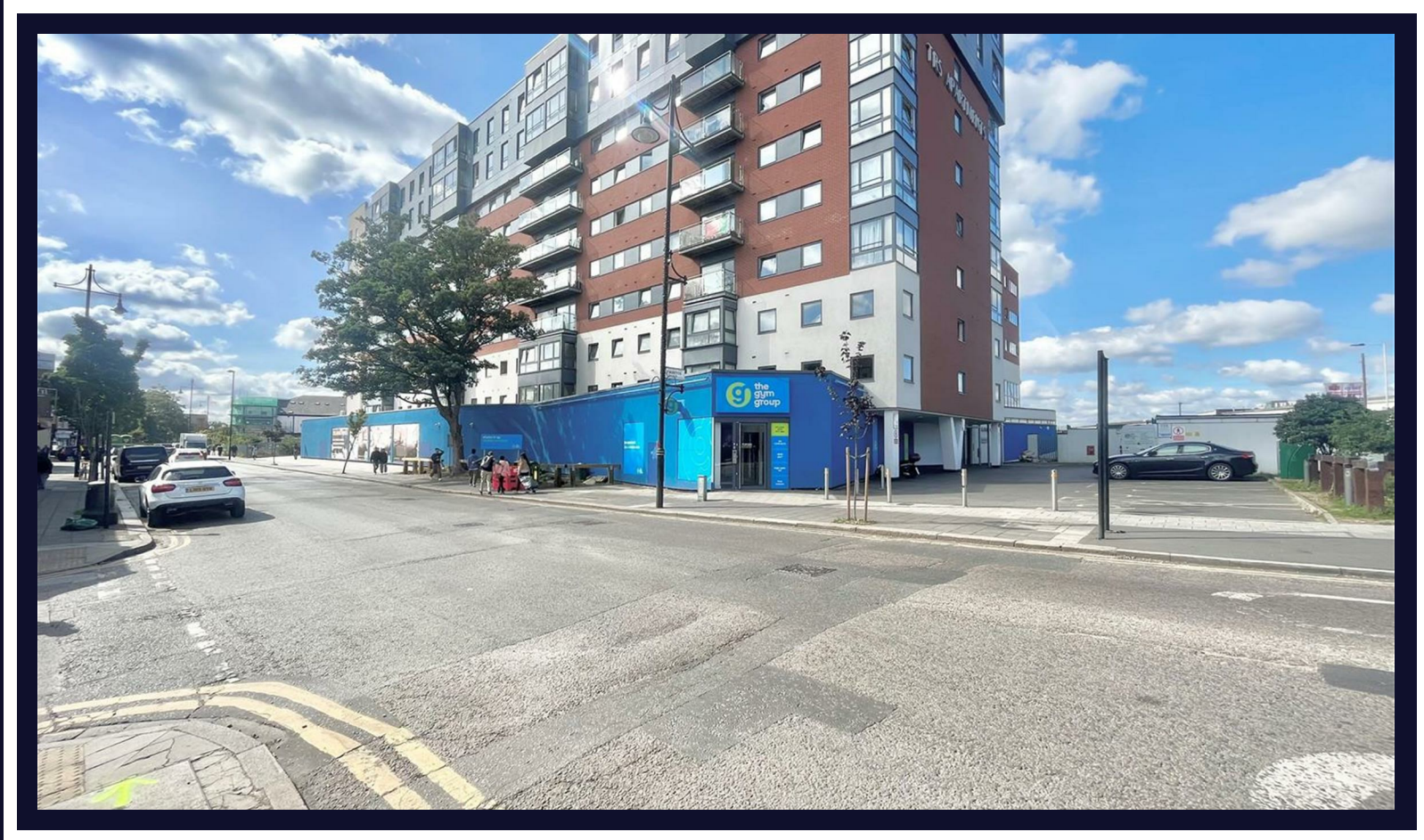


# The Green

Southall • • UB2 4FE

PCM: £1,800 PCM



coopers  
est 1986

A well presented and spacious two double bedroom, two bathroom apartment to rent in the popular TRS Apartment block in Southall. The property is located within walking distance to Southall Station, which provides easy access to Central London via the Elizabeth Line. Heathrow Airport is also within close proximity, along with the M4/M25 Motorways and a number of local amenities.

Features include two double bedrooms, two bathrooms, spacious lounge, modern fitted kitchen, communal areas and gas central heating. Parking available at an additional cost.

Unfurnished and available now.

TRS Apartments  
Two Double Bedrooms

Two Bathrooms

Spacious Lounge

Fitted Kitchen

Southall Station

Elizabeth Line

Parking available at additional cost

Local Amenities

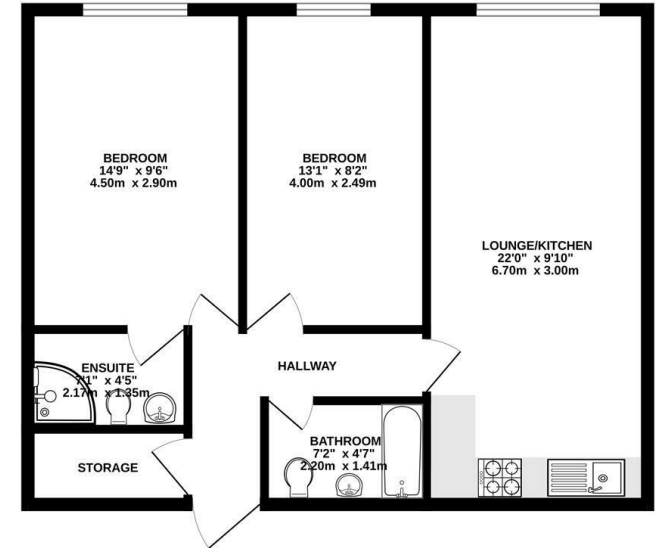
Unfurnished

**Available Date**

7th February 2026



GROUND FLOOR  
606 sq.ft. (56.3 sq.m.) approx.



TOTAL FLOOR AREA: 606 sq.ft. (56.3 sq.m.) approx.  
Whilst every attempt has been made to ensure the accuracy of the floorplan, measurements of doors, windows, rooms and any other items are approximate and no responsibility is taken for any error, omission or misstatement. This plan is for guidance purposes only and should be used in conjunction with any prospective purchase. The services, systems and appliances shown have not been tested and no guarantee as to their operability or efficiency can be given.  
Made with floorplan 3.0.0.0



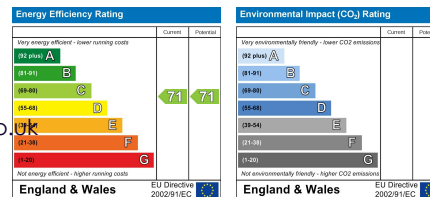
**coopers**  
est 1986

**01895 230 103**

109 Hillingdon Hill, Hillingdon Village,  
Middlesex, UB10 0JQ

propertymanagement@coopersresidential.co.uk

**CoopersResidential.co.uk**



Important Notice: These particulars, whilst believed to be accurate are set out as a general outline only for guidance and do not constitute any part of an offer or contract. Intending purchasers should not rely on them as statements or representation of fact, but must satisfy themselves by inspection or otherwise has the authority to make or give any representation or warranty in respect of the property.