

64 Bays Farm Court, 480 Bath Road

West Drayton • • UB7 0DZ

PCM: £1,600 PCM



coopers
est 1986

A newly refurbished and spacious two double bedroom maisonette to rent located nearby to Heathrow Airport, providing good transport links to Heathrow Terminal 5 Underground Station and within short distance to the M4/M25 Motorways.

Features include two double bedrooms, spacious lounge, large kitchen with storage, newly refurbished bathroom and allocated parking.

Unfurnished and available now.

Ground Floor Maisonette

Two Double Bedrooms

Newly Refurbished

Spacious Lounge

Great Storage Throughout

Allocated Parking

Modern Bathroom

M4/M25 Motorway Access

Heathrow Airport

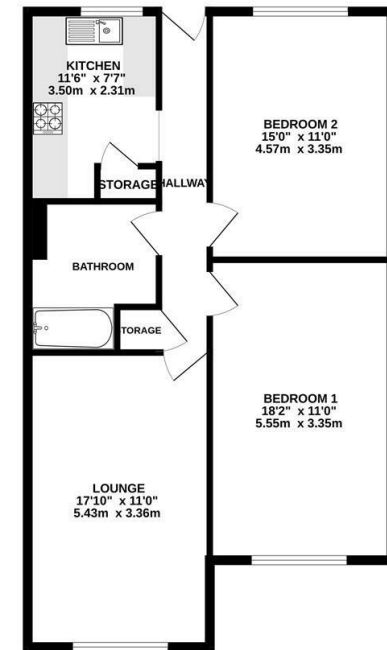
Communal Gardens

Available Date

2nd February 2026



GROUND FLOOR
787 sq.ft. (73.1 sq.m.) approx.



TOTAL FLOOR AREA : 787 sq.ft. (73.1 sq.m.) approx.
While every attempt has been made to ensure the accuracy of the floorplan contained herein, measurements of doors, windows, rooms and any other items are approximate and no responsibility is taken for any error, omission or mis-statement. This plan is for illustrative purposes only and should be used as such by any prospective purchaser. The services, systems and appliances shown have not been tested and no guarantee as to their operation or efficiency can be given.
Made with Metrepx ©2026



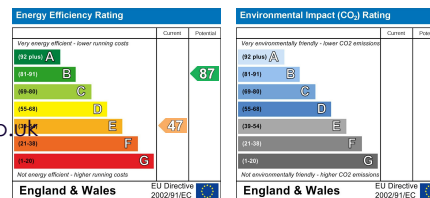
coopers
est 1986

01895 230 103

109 Hillingdon Hill, Hillingdon Village,
Middlesex, UB10 0JQ

propertymanagement@coopersresidential.co.uk

CoopersResidential.co.uk



Important Notice: These particulars, whilst believed to be accurate are set out as a general outline only for guidance and do not constitute any part of an offer or contract. Intending purchasers should not rely on them as statements or representation of fact, but must satisfy themselves by inspection or otherwise has the authority to make or give any representation or warranty in respect of the property.