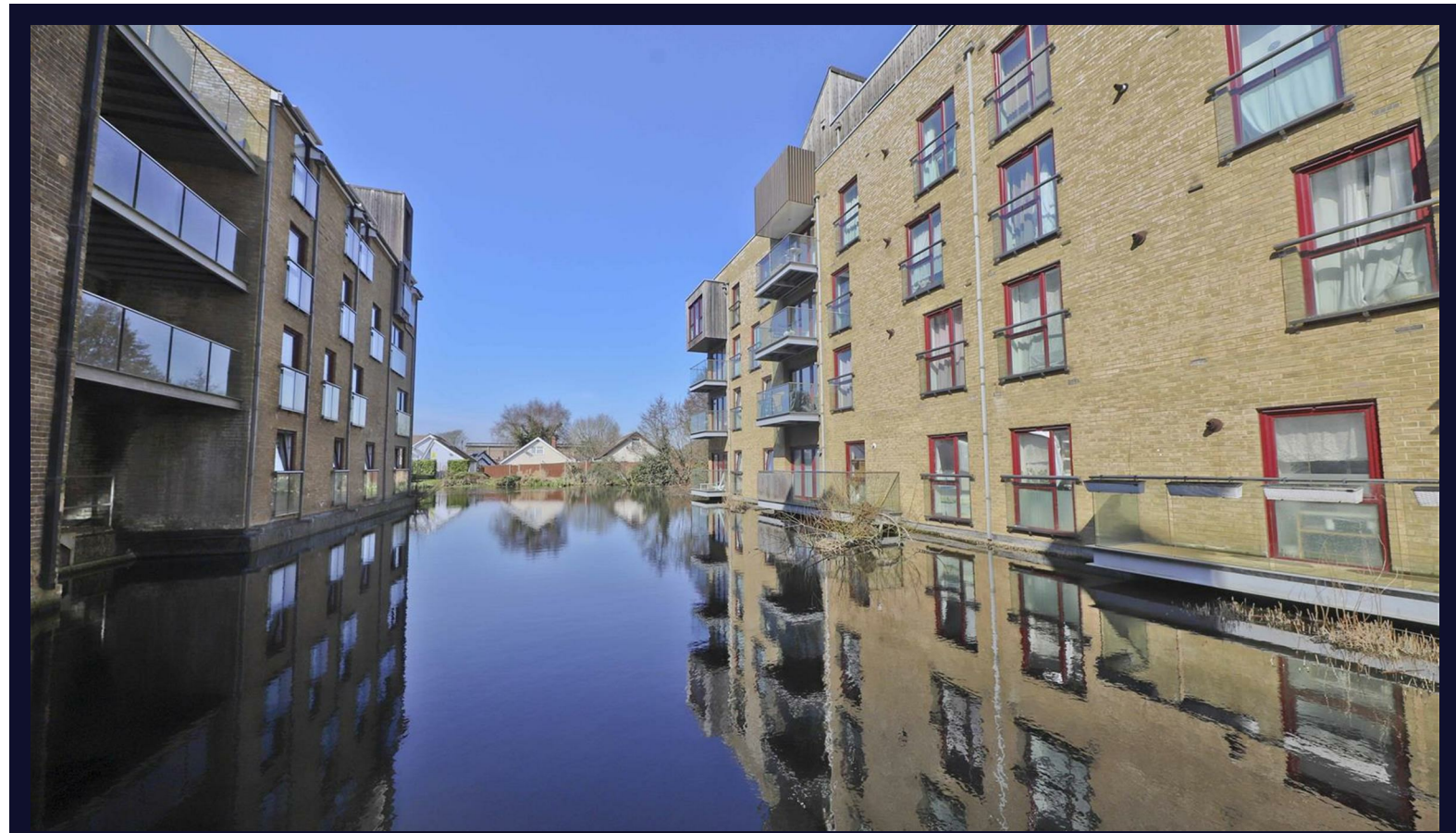


Kings Mill Way

Uxbridge • • UB9 4BT

PCM: £1,650 PCM



coopers
est 1986

A Truly Stunning, Modern & Contemporary ONE BEDROOM Luxury apartment situated in the popular Kings Island Development close to Uxbridge High Street. A multitude of Bars, Restaurants and Shopping facilities on your doorstep. Accommodation; Bedroom with fitted wardrobes, Luxury bathroom, Large lounge, Fully fitted kitchen with appliances. Benefits; Allocated parking, Entry-phone system, Gas central heating, Double glazing. Furnished.

Walking Distance to Uxbridge Town Centre

Gated Development

Balcony

Fully Fitted Kitchen

Concierge

Close to the A40/M40

Allocated Parking

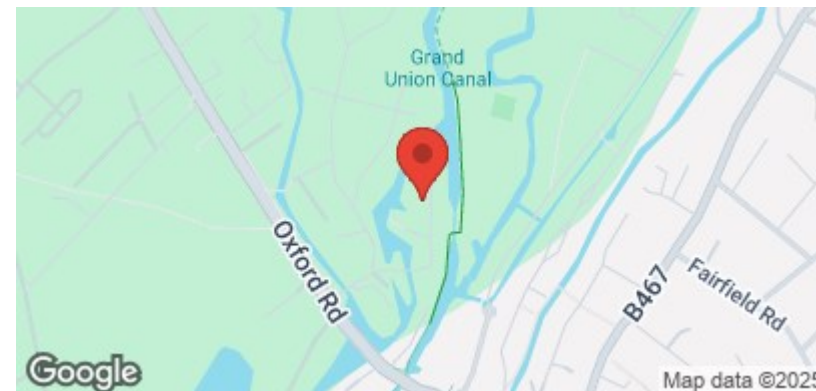
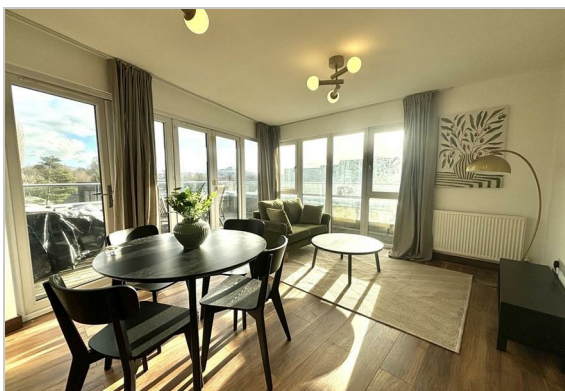
Modern Development

Rooftop Terrace

Beautiful Views

Available Date

10th January 2026



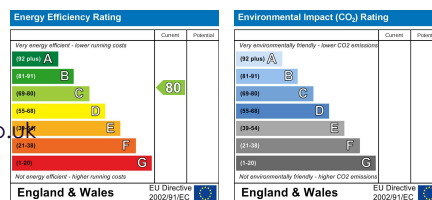
coopers
est 1986

01895 230 103

**109 Hillingdon Hill, Hillingdon Village,
Middlesex, UB10 0JQ**

propertymanagement@coopersresidential.co.uk

CoopersResidential.co.uk



Important Notice: These particulars, whilst believed to be accurate are set out as a general outline only for guidance and do not constitute any part of an offer or contract. Intending purchasers should not rely on them as statements or representation of fact, but must satisfy themselves by inspection or otherwise has the authority to make or give any representation or warranty in respect of the property.