

12 Myddleton Road

Uxbridge • • UB8 2DN

PCM: £1,350 PCM



coopers
est 1986



A well presented and spacious one bedroom apartment located in the heart of Uxbridge. The property is located within walking distance to Uxbridge Station which provides fantastic transport links to Central London. Uxbridge High Street is also within close proximity.

Features include a large double bedroom, spacious lounge, fitted kitchen with appliances, bathroom with shower and residential parking is available. The property also allows access to a shared garden.

Unfurnished.

Close to Town Centre

Local amenities

Great transport links

Council Band Tax C

Unfurnished

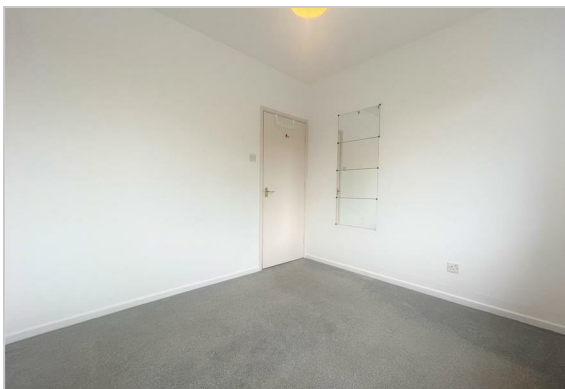
Great sized bedroom

Close to A40/M40

Resident parking available

Ample storage space

Close to Uxbridge Station



Available Date

12th February 2026

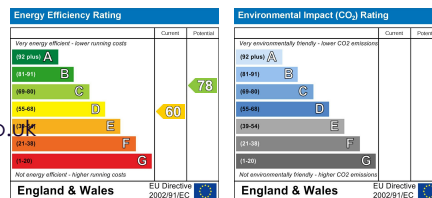
coopers
est 1986

01895 230 103

**109 Hillingdon Hill, Hillingdon Village,
Middlesex, UB10 0JQ**

propertymanagement@coopersresidential.co.uk

CoopersResidential.co.uk



Important Notice: These particulars, whilst believed to be accurate are set out as a general outline only for guidance and do not constitute any part of an offer or contract. Intending purchasers should not rely on them as statements or representation of fact, but must satisfy themselves by inspection or otherwise has the authority to make or give any representation or warranty in respect of the property.