

# Wilton Close

West Drayton • Middlesex • UB7 0BB

PCM: £2,000 PCM



coopers  
est 1986

A newly refurbished and spacious three bedroom semi detached house to rent located in a sought after location in Harmondsworth, West Drayton. The property provides easy access to Heathrow Airport, M4/M25 Motorways, has great transport links and is nearby to local amenities/sought after schools.

Features include three bedrooms, spacious lounge, modern kitchen, brand new family bathroom, private rear garden, off street parking, garage and gas central heating.

Unfurnished and available now.

### Three Bedroom Semi Detached House

Newly Refurbished

Spacious Lounge

Modern Kitchen

Great Transport Links

Heathrow Airport Nearby

Private Rear Garden

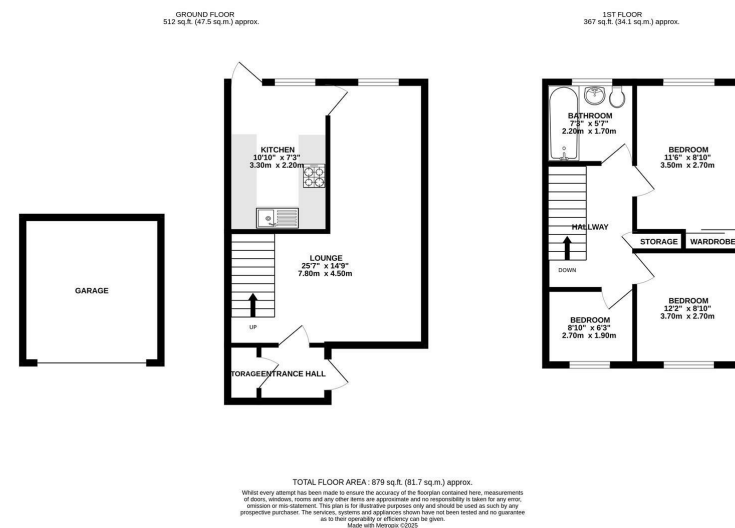
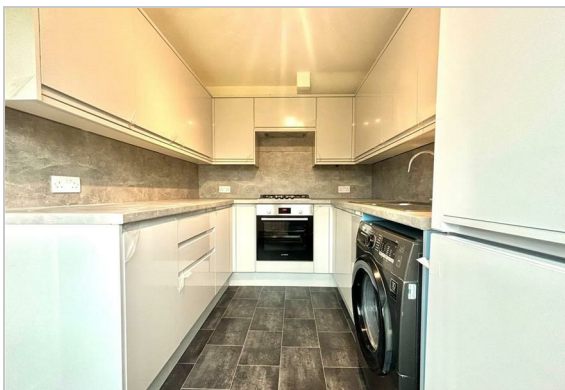
Gas Central Heating

Garage

Unfurnished

### Available Date

20th December 2025



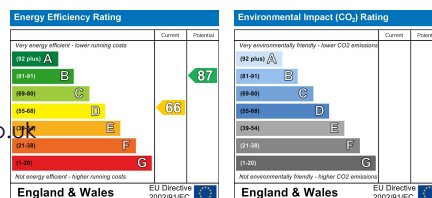
**coopers**  
est 1986

**01895 230 103**

**109 Hillingdon Hill, Hillingdon Village,  
Middlesex, UB10 0JQ**

propertymanagement@coopersresidential.co.uk

**CoopersResidential.co.uk**



Important Notice: These particulars, whilst believed to be accurate are set out as a general outline only for guidance and do not constitute any part of an offer or contract. Intending purchasers should not rely on them as statements or representation of fact, but must satisfy themselves by inspection or otherwise has the authority to make or give any representation or warranty in respect of the property.