

Glisson Road

Uxbridge • • UB10 0HJ

PCM: £1,950 PCM



coopers
est 1986



A well presented and spacious three bedroom semi-detached house to rent located on the popular Silver Estate in Hillingdon.

The property offers access to a number of local amenities including local shops, Hillingdon's Metropolitan/Piccadilly line train station and a number of highly regarded local schools. The A40/ M40 with its links to London and the Home Counties are a short drive away.

Features include three bedrooms, spacious lounge, kitchen with dining area, family bathroom, private rear garden and off street parking.

Unfurnished.

Three Bedroom House

Silver Estate

Spacious Lounge

Kitchen with Dining Area

Family Bathroom

Private Rear Garden

Off Street Parking

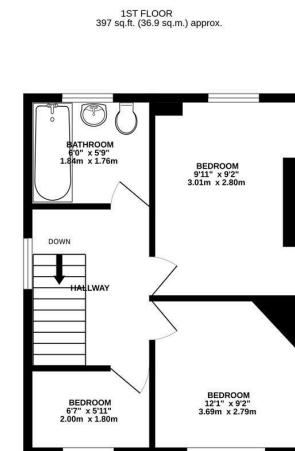
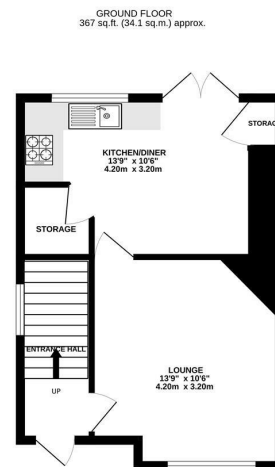
Local Amenities Nearby

Great Transport Links

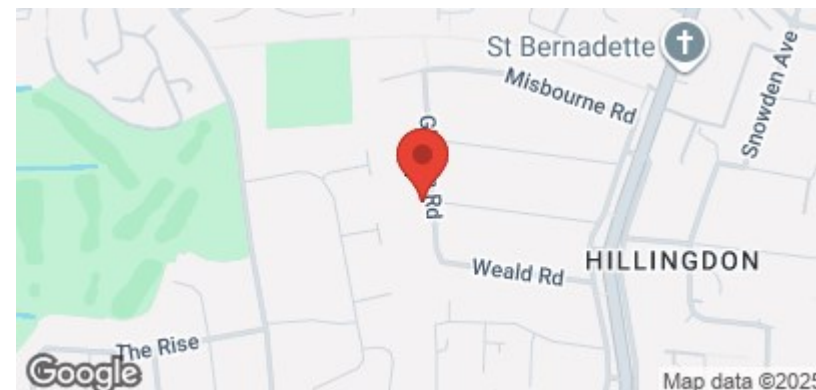
Unfurnished

Available Date

13th December 2025



TOTAL FLOOR AREA: 764 sq.ft. (71.0 sq.m.) approx.
Whilst every attempt has been made to ensure the accuracy of the floorplan contained here, measurements of rooms, corridors, stairs and any other parts are approximate and no responsibility is taken for any error, omission or mis-statement. This plan is for illustrative purposes only and should be used as such by any prospective purchaser. The services, systems and appliances shown have not been tested and no guarantee as to their operability or efficiency can be given.
Made with Metronom 02025



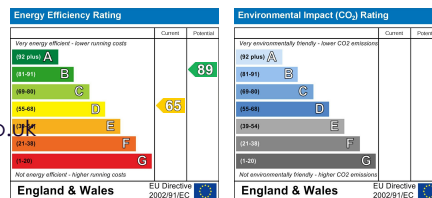
coopers
est 1986

01895 230 103

109 Hillingdon Hill, Hillingdon Village,
Middlesex, UB10 0JQ

propertymanagement@coopersresidential.co.uk

CoopersResidential.co.uk



Important Notice: These particulars, whilst believed to be accurate are set out as a general outline only for guidance and do not constitute any part of an offer or contract. Intending purchasers should not rely on them as statements or representation of fact, but must satisfy themselves by inspection or otherwise has the authority to make or give any representation or warranty in respect of the property.