

# Craig Drive

Uxbridge • Middlesex • UB8 3HL

PCM: £2,050 PCM



coopers  
est 1986

Presented to the market is this Three bedroom Semi-detached home on Craig Drive. Craig Drive is a popular residential road in Hillingdon which is conveniently located for local shops, schools and within easy reach of Uxbridge Town Centre with its variety of shops, restaurants, bus links and Metropolitan/Piccadilly train station. Heathrow airport, Stockley Park Business Centre and Golf Club, Brunel University and the M4 and M25 with their links to London and the Home Counties are all just a short drive away.

Features include three bedrooms, spacious lounge, dining room, modern fitted kitchen, family bathroom, gas central heating and a large private garden.

Part Furnished.

Three Bedroom

Semi-Detached

13ft Living Area

Garage

Available Early December

13ft Master Bedroom

Furnished/Unfurnished

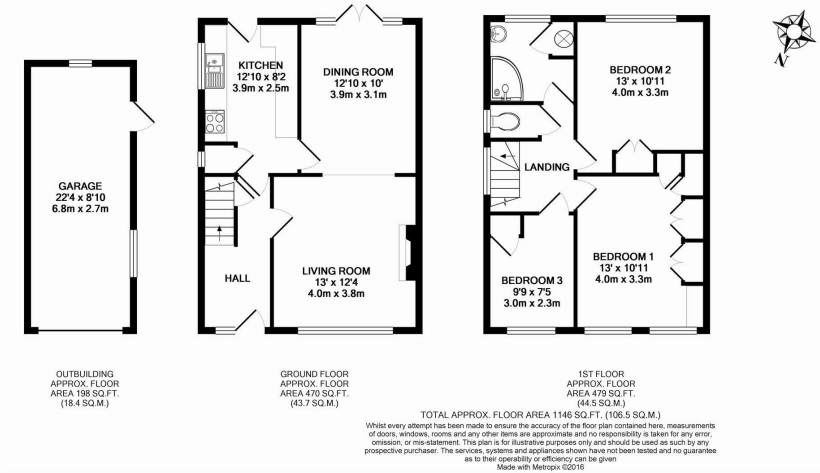
Private Rear Garden

Great transport links

EPC Rating D

**Available Date**

10th December 2025



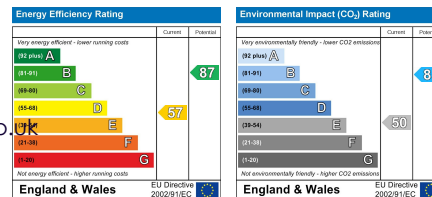
**coopers**  
est 1986

**01895 230 103**

**109 Hillingdon Hill, Hillingdon Village,  
Middlesex, UB10 0JQ**

propertymanagement@coopersresidential.co.uk

**CoopersResidential.co.uk**



Important Notice: These particulars, whilst believed to be accurate are set out as a general outline only for guidance and do not constitute any part of an offer or contract. Intending purchasers should not rely on them as statements or representation of fact, but must satisfy themselves by inspection or otherwise has the authority to make or give any representation or warranty in respect of the property.