

Cherry Grove

Hillingdon • Middlesex • UB8 3ET

PCM: £1,900 PCM



coopers
est 1986

Spacious and well presented 3 bedroom semi-detached house to rent in Hillingdon.

Located moments away from Hillingdon Hospital and within close proximity of highly rated schools, this fantastic house offers a great home to a loving family. With good transport links to Uxbridge and West Drayton and also a short drive to Stockley Business Park and Heathrow Airport. Hillingdon ACS is also within a short walk.

Available Part Furnished

Three Bedrooms

Great local schools

Close To Train Station

Walking Distance To Schools

Close To Heathrow Airport

Council Tax Band D

Close To Local Shops

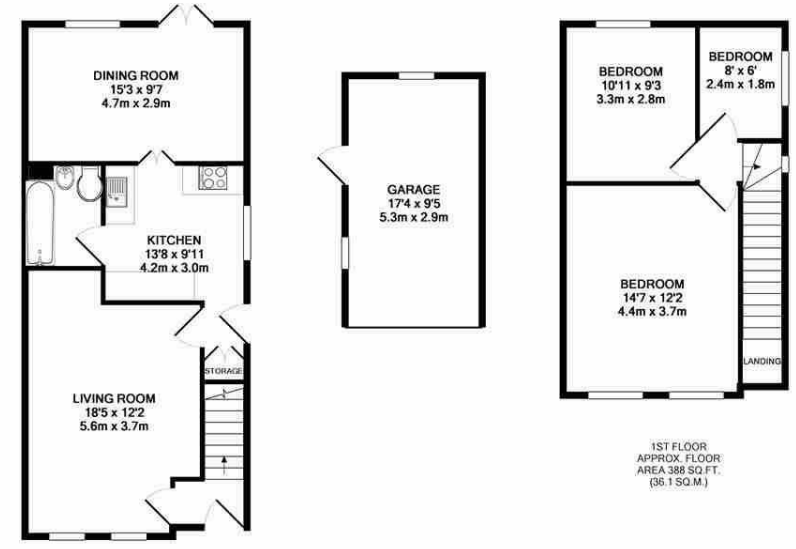
Driveway

Private Garden

Part Furnished

Available Date

7th August 2025

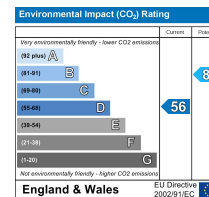
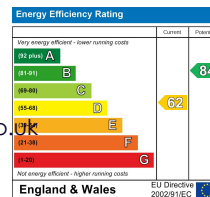


GROUND FLOOR
APPROX. FLOOR
AREA 697 SQ.FT.
(64.8 SQ.M.)

TOTAL APPROX. FLOOR AREA 1086 SQ.FT. (100.9 SQ.M.)

Whilst every attempt has been made to ensure the accuracy of the floor plan contained here, measurements of doors, windows, rooms and any other items are approximate and no responsibility is taken for any error, omission, or mis-statement. This plan is for illustrative purposes only and should be used as such by any prospective purchaser. The services, systems and appliances shown have not been tested and no guarantee as to their operability or efficiency can be given.

Made with Metropix ©2015



Important Notice: These particulars, whilst believed to be accurate are set out as a general outline only for guidance and do not constitute any part of an offer or contract. Intending purchasers should not rely on them as statements or representation of fact, but must satisfy themselves by inspection or otherwise has the authority to make or give any representation or warranty in respect of the property.

coopers
est 1986

01895 230 103

**109 Hillingdon Hill, Hillingdon Village,
Middlesex, UB10 0JQ**

propertymanagement@coopersresidential.co.uk

CoopersResidential.co.uk