

Brambles Farm Drive

Uxbridge • • UB10 0DY

PCM: £2,250 PCM



coopers
est 1986

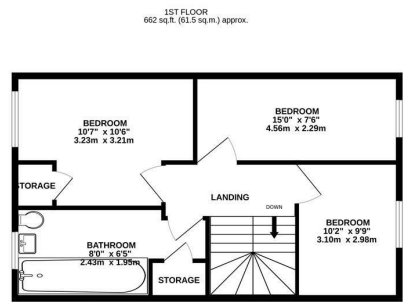
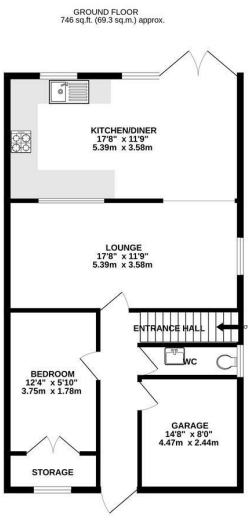
A spacious and well presented four bedroom semi detached house to rent located within close proximity to Hillingdon Hospital, Uxbridge Underground Station, Brunel University and Stockley Business Park. The property also provides easy access to the M4/M25/M40 Motorways. Local sought after schools are nearby.

Features include three double bedrooms upstairs, further bedroom downstairs, spacious lounge, modern kitchen with dining area, family bathroom with shower, downstairs W/C, Garage, Private Rear Garden, Off Street Parking.

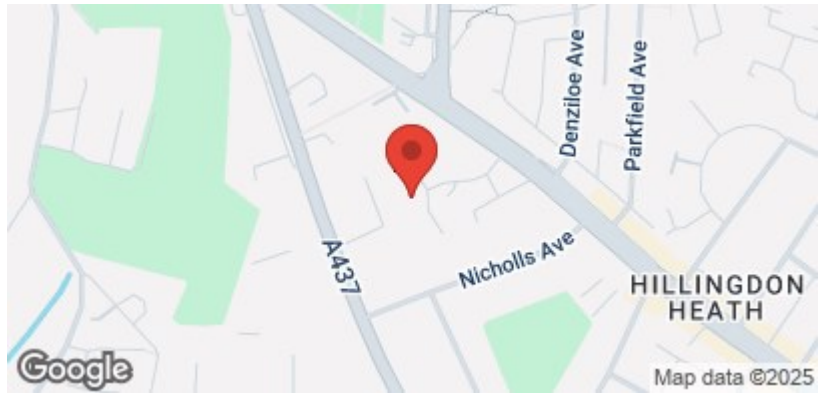
Unfurnished and available now.

- Four Bedroom Semi Detached House
- Close proximity to Hillingdon Hospital
- Good Transport Links to Uxbridge Station
- Nearby to Local Schools
- Spacious Lounge
- Modern Kitchen
- Private Rear Garden
- Large Driveway
- Off Street Parking
- Unfurnished

Available Date
17th May 2025

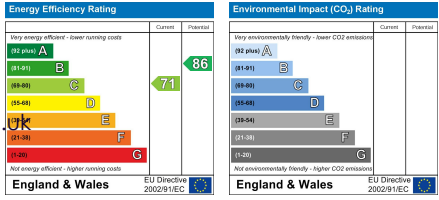


TOTAL FLOOR AREA: 1408 sq.ft. (130.8 sq.m.) approx.
Whilst every attempt has been made to ensure the accuracy of the floorplan contained herein, measurements of doors, windows, rooms and any other items are approximate and no responsibility is taken for any error, omission or misstatement. This plan is for guidance purposes only and should be used as such by any prospective purchaser. The services, systems and appliances shown have not been tested and no guarantee as to their operability or efficiency can be given.
Made with floorplan 10020



01895 230 103
109 Hillingdon Hill, Hillingdon Village,
Middlesex, UB10 0JQ
propertymanagement@coopersresidential.co.uk

CoopersResidential.co.uk



Important Notice: These particulars, whilst believed to be accurate are set out as a general outline only for guidance and do not constitute any part of an offer or contract. Intending purchasers should not rely on them as statements or representation of fact, but must satisfy themselves by inspection or otherwise has the authority to make or give any representation or warranty in respect of the property.