

472 Bath Road

Longford • Middlesex • UB7 0FB

PCM: £1,300 PCM



coopers
est 1986

Superb one bedroom apartment situated within a unique contemporary development within close proximity of Heathrow Airport. This stunning apartment benefits from one double bedroom, spacious lounge, fully tiled luxury fitted kitchen with appliances, bathroom with shower, triple glazing, balcony, gas central heating and allocated parking.

Unfurnished and available now.

One Bedroom Apartment

Spacious Lounge

Double Bedroom

Bathroom with shower

Fitted Kitchen

Unfurnished

Nearby to Local Amenities

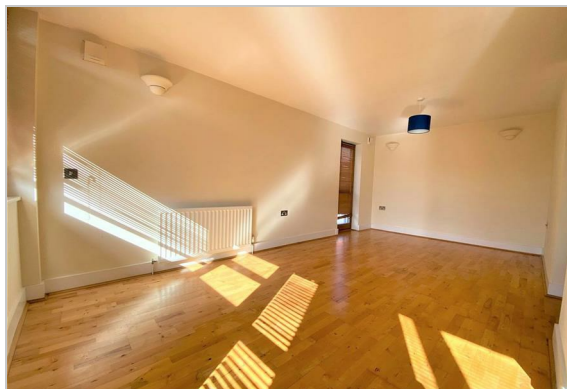
Close to Heathrow Airport

Allocated Parking Space

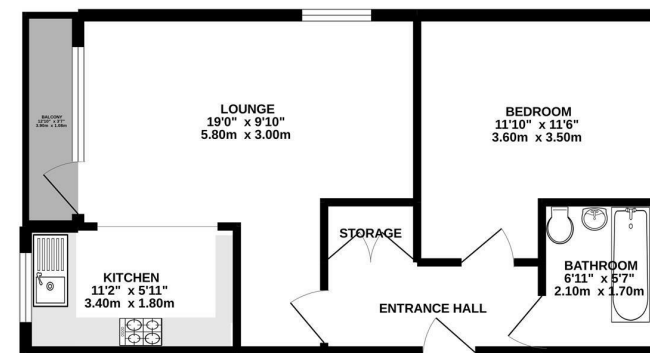
Good Transport Links

Available Date

7th July 2025



GROUND FLOOR
460 sq.ft. (42.7 sq.m.) approx.



TOTAL FLOOR AREA: 460 sq.ft. (42.7 sq.m.) approx.
Whilst every attempt has been made to ensure the accuracy of the floorplan contained herein, measurements of doors, windows, rooms and any other items are approximate and no responsibility is taken for any error, omission or misstatement. This plan is for illustrative purposes only and should be used as such by any prospective purchaser. The services, systems and appliances shown have not been tested and no guarantee as to their quantity or efficiency can be given.
Made with Metropix (0202)



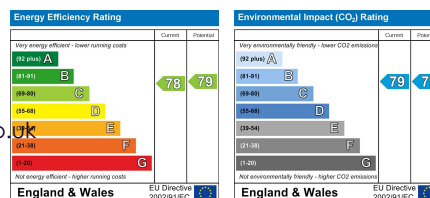
coopers
est 1986

01895 230 103

**109 Hillingdon Hill, Hillingdon Village,
Middlesex, UB10 0JQ**

propertymanagement@coopersresidential.co.uk

CoopersResidential.co.uk



Important Notice: These particulars, whilst believed to be accurate are set out as a general outline only for guidance and do not constitute any part of an offer or contract. Intending purchasers should not rely on them as statements or representation of fact, but must satisfy themselves by inspection or otherwise has the authority to make or give any representation or warranty in respect of the property.