

# 292-298 High Street

Slough • Slough • SL1 1GF  
PCM: £1,050 PCM



coopers  
est 1986





Located in the heart of Slough is this 7th floor studio suite with fantastic views. Comprising of a separate bedroom area, lounge/kitchen area and shower room. Benefits include entry phone system, cycle store and integrated appliances.

Available from June and Furnished.

Studio/1 bedroom suite

Local amenities

7th Floor

Washer/Dryer

Cycle store

Entry phone system

Slough Town Centre

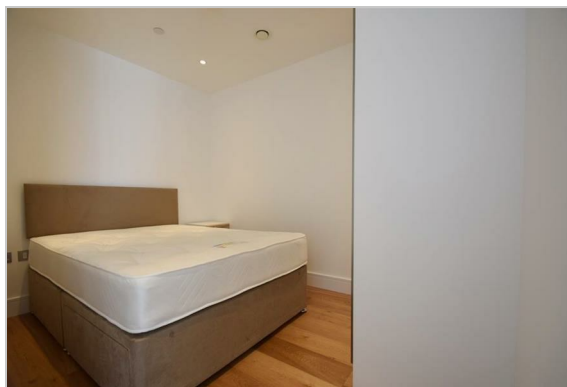
Close to Slough Mainline Station

Lift

Fantastic Views

**Available Date**

9th June 2025



TOTAL APPROX. FLOOR AREA 448 SQ.FT. (41.6 SQ.M.)

Whilst every attempt has been made to ensure the accuracy of the floor plan contained here, measurements of doors, windows, rooms and any other items are approximate and no responsibility is taken for any error, omission, or mis-statement. This plan is for illustrative purposes only and should be used as such by any prospective purchaser. The services, systems and appliances shown have not been tested and no guarantee as to their operability or efficiency can be given  
Made with Metropix ©2018



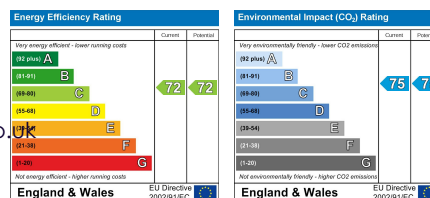
**coopers**  
est 1986

**01895 230 103**

**109 Hillingdon Hill, Hillingdon Village,  
Middlesex, UB10 0JQ**

propertymanagement@coopersresidential.co.uk

**CoopersResidential.co.uk**



Important Notice: These particulars, whilst believed to be accurate are set out as a general outline only for guidance and do not constitute any part of an offer or contract. Intending purchasers should not rely on them as statements or representation of fact, but must satisfy themselves by inspection or otherwise has the authority to make or give any representation or warranty in respect of the property.