

Grosvenor Crescent

Uxbridge • Middlesex • UB10 9ES

PCM: £2,000 PCM



coopers
est 1986

This lovely THREE BEDROOM, TWO BATHROOM house is a perfect family home and a must view property. Located just a short walk to Hillingdon Train Station and shops and within seconds of the A40/M40 Motorway. Accommodation, Three bedrooms, Two bathrooms, Lounge, Dining room, Conservatory leading to private garden, Fully fitted kitchen. Benefits; Gas central heating; Double glazing, Off street Parking and Garage. UNFURNISHED

Perfect Family Home

10 Minute walk to Hillingdon Station

Driveway Parking

Close to Local Shops

Located in the Oakfarm Estate

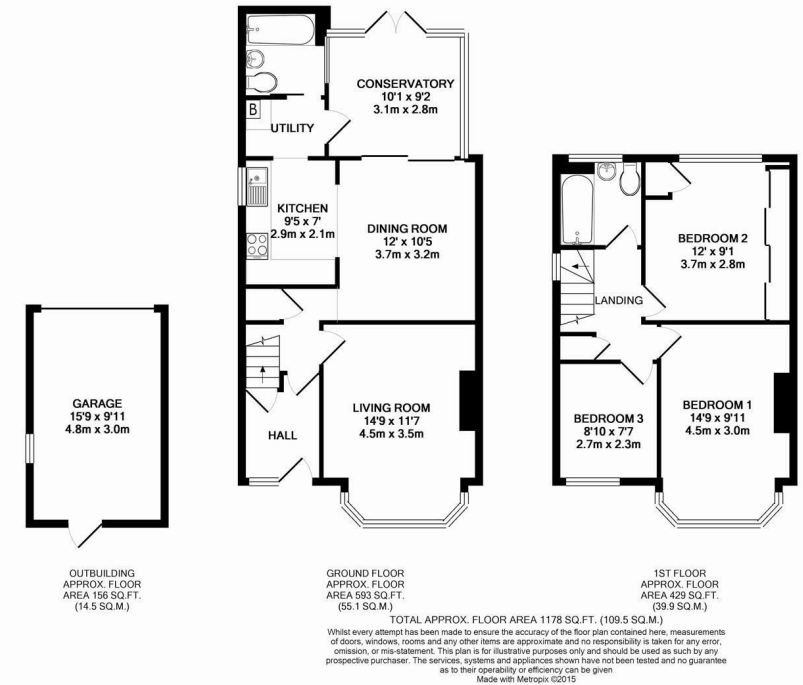
Close to Local Schools

Conservatory

Gas Central Heating

Available Date

20th June 2025



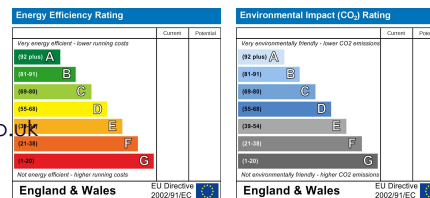
coopers
est 1986

01895 230 103

109 Hillingdon Hill, Hillingdon Village,
Middlesex, UB10 0JQ

propertymanagement@coopersresidential.co.uk

CoopersResidential.co.uk



Important Notice: These particulars, whilst believed to be accurate are set out as a general outline only for guidance and do not constitute any part of an offer or contract. Intending purchasers should not rely on them as statements or representation of fact, but must satisfy themselves by inspection or otherwise has the authority to make or give any representation or warranty in respect of the property.