

Merrivale Mews

West Drayton • Middlesex • UB7 7LZ

PCM: £1,200 PCM



coopers
est 1986

Well presented ground floor maisonette overlooking the River Fray and located in a quiet and peaceful spot close to West Drayton High Street, West Drayton Mainline Station and Stockley Business Park. Comprising of porch leading to lounge, bathroom, double bedroom with built in wardrobes, fitted kitchen with appliances leading to communal gardens, double glazing and parking.

FURNISHED.

Well Presented Property
Overlooking the River Fray

Quiet Location

Close to Heathrow Business Park

Stone's throw from West Drayton Station

Communal Garden

Residential Parking

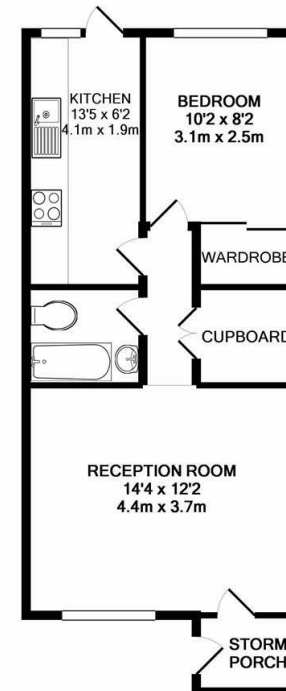
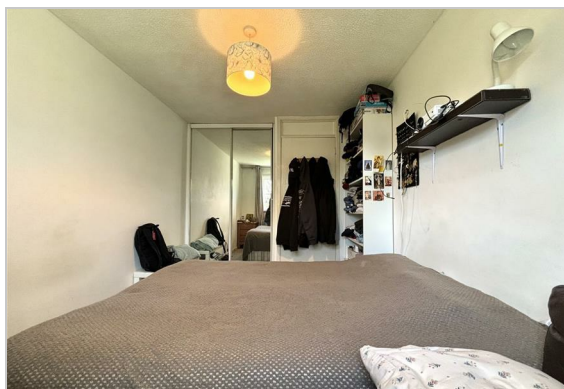
Fully Fitted Kitchen

Close to Local Shops

Great transport links

Available Date

4th July 2025



TOTAL APPROX. FLOOR AREA 438 SQ.FT. (40.7 SQ.M.)

Whilst every attempt has been made to ensure the accuracy of the floor plan contained here, measurements of doors, windows, rooms and any other items are approximate and no responsibility is taken for any error, omission, or mis-statement. This plan is for illustrative purposes only and should be used as such by any prospective purchaser. The services, systems and appliances shown have not been tested and no guarantee as to their operability or efficiency can be given.
Made with Metropix ©2018



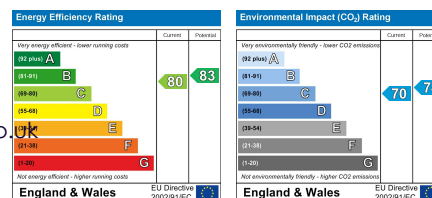
coopers
est 1986

01895 230 103

109 Hillingdon Hill, Hillingdon Village,
Middlesex, UB10 0JQ

propertymanagement@coopersresidential.co.uk

CoopersResidential.co.uk



Important Notice: These particulars, whilst believed to be accurate are set out as a general outline only for guidance and do not constitute any part of an offer or contract. Intending purchasers should not rely on them as statements or representation of fact, but must satisfy themselves by inspection or otherwise has the authority to make or give any representation or warranty in respect of the property.