

Vantage Building

Station Approach • Hayes • UB3 4FA
PCM: £1,450 PCM



coopers
est 1986

GROUND FLOOR
430 sq.ft. (40.0 sq.m.) approx.

Presented to the market, this luxury one bedroom apartment located in the sought after Highpoint Village Development. The property is situated next door to Hayes and Harlington Station, provides easy access to Stockley Park, Local Amenities and provides great bus links.

Features include a double bedroom with a built in wardrobe, spacious lounge leading to a private balcony, fitted kitchen with appliances, Bathroom with shower, Great Storage Throughout, Concierge, Gymnasium and Swimming Pool.

Available Furnished.

High Point Village

Spacious One Bedroom Apartment

Large Lounge

Fitted Kitchen with Appliances

Private Balcony

Double Bedroom with Wardrobe

Furnished

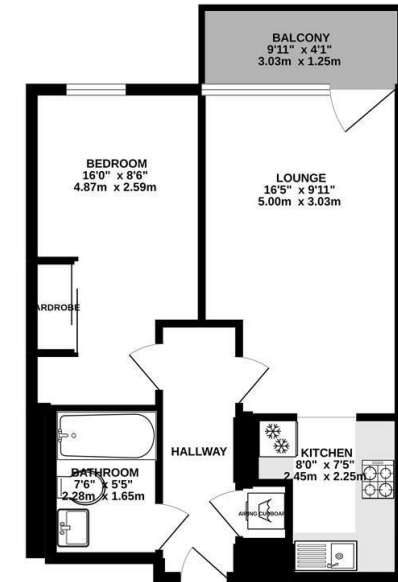
Elizabeth Line

Next to Hayes and Harlington Station

Easy Access to Local Amenities

Available Date

13th June 2025



TOTAL FLOOR AREA: 430 sq.ft. (40.0 sq.m.) approx.
Whilst every attempt has been made to ensure the accuracy of the floorplan contained here, measurements of areas, windows, rooms and any other items are approximate and no responsibility is taken for any error, omission or mis-statement. This plan is for illustrative purposes only and should be used as such by any prospective purchaser. The services, systems and appliances shown have not been tested and no guarantee is given as to their operability or efficiency can be given.
Made with Miroplan C2020



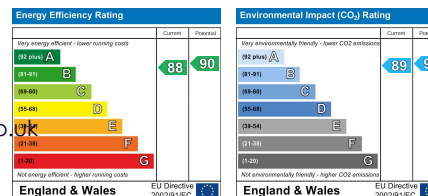
coopers
est 1986

01895 230 103

**109 Hillingdon Hill, Hillingdon Village,
Middlesex, UB10 0JQ**

propertymanagement@coopersresidential.co.uk

CoopersResidential.co.uk



Important Notice: These particulars, whilst believed to be accurate are set out as a general outline only for guidance and do not constitute any part of an offer or contract. Intending purchasers should not rely on them as statements or representation of fact, but must satisfy themselves by inspection or otherwise has the authority to make or give any representation or warranty in respect of the property.