

Lees Road

Hillingdon • Middlesex • UB8 3AS
PCM: £3,000 PCM



coopers
est 1986

A well presented and spacious four bedroom detached house to rent located on a popular residential road in Hillingdon. The property is located within close proximity to Hillingdon Hospital, Stockley Business Park and Brunel University. Uxbridge/Hillingdon Underground Stations are easily accessible via bus links which stop down the road, The M4/M25 Motorways are just a short drive away.

Features include four double bedrooms, two bathrooms, large lounge, spacious kitchen, separate dining room, private rear garden, off street parking for multiple cars, gas central heating and great storage throughout.

Unfurnished and available now.

Four Double bedroom house

Detached

Sought after location

Large Living Room

Separate Dining Room

Spacious Kitchen

Two Bathrooms

Private Rear Garden

Nearby to Hillingdon Hospital/ Stockley Business Park

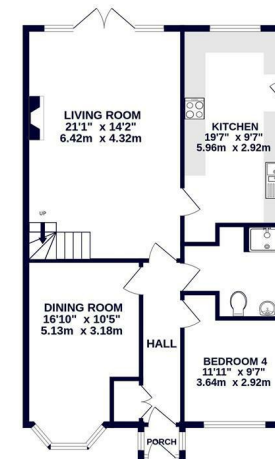
Great Transport Links

Available Date

25th April 2025



GROUND FLOOR
868 sq.ft. (80.7 sq.m.) approx.



1ST FLOOR
599 sq.ft. (55.6 sq.m.) approx.



coopers
est 1986

TOTAL FLOOR AREA: 1467 sq.ft. (136.3 sq.m.) approx.
Whilst every attempt has been made to ensure the accuracy of the floorplan contained herein, measurements of doors, windows, rooms and any other items are approximate and no responsibility is taken for any error, omission or mis-statement. This plan is for illustrative purposes only and should be used as such by any prospective purchaser. The services, systems and appliances shown have not been tested and no guarantee as to their operation or efficiency can be given.
Made with Metropac (2024)



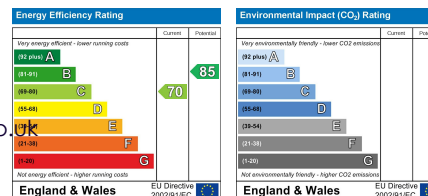
coopers
est 1986

01895 230 103

109 Hillingdon Hill, Hillingdon Village,
Middlesex, UB10 0JQ

propertymanagement@coopersresidential.co.uk

CoopersResidential.co.uk



Important Notice: These particulars, whilst believed to be accurate are set out as a general outline only for guidance and do not constitute any part of an offer or contract. Intending purchasers should not rely on them as statements or representation of fact, but must satisfy themselves by inspection or otherwise has the authority to make or give any representation or warranty in respect of the property.