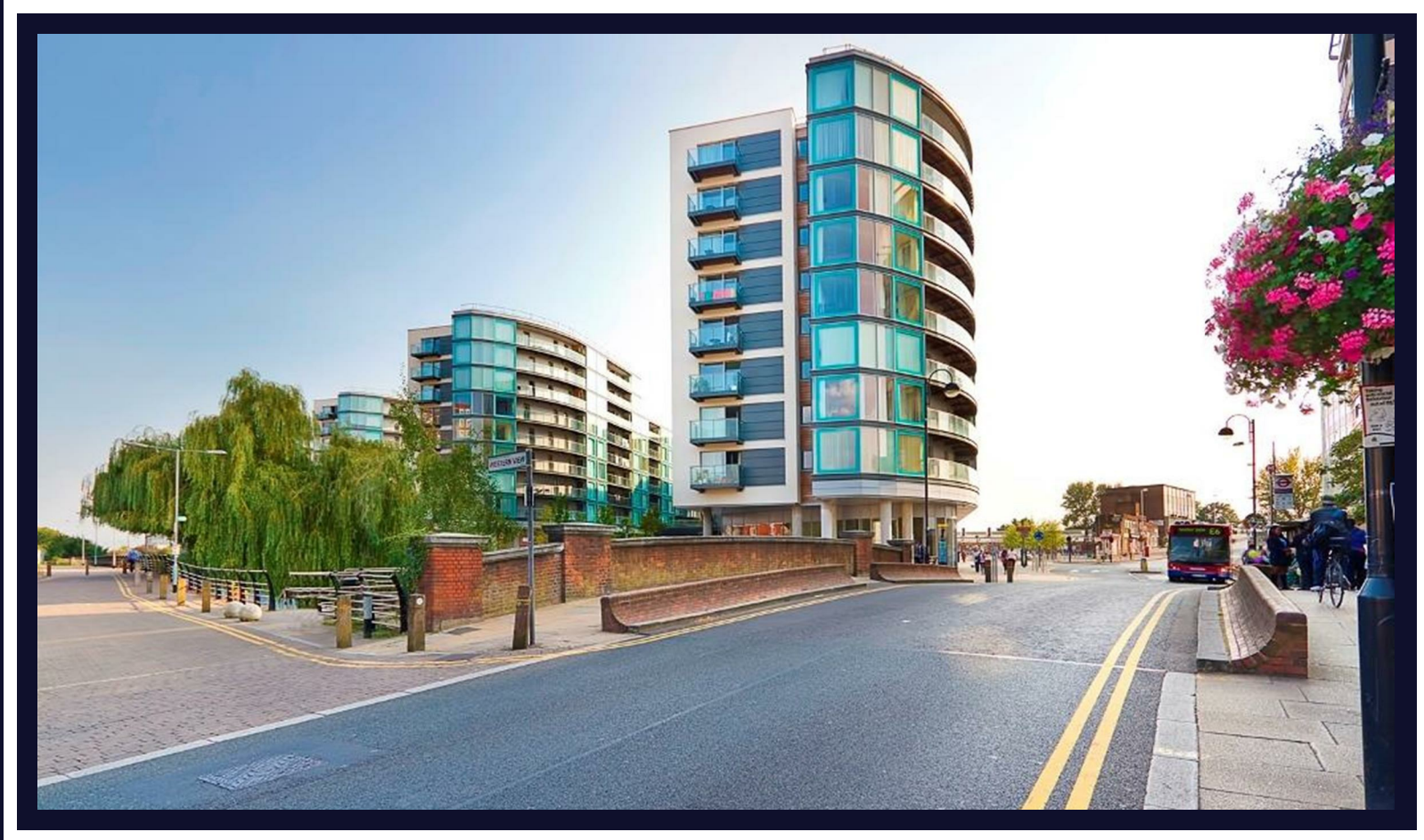


Station Approach

Hayes • Middlesex • UB3 4FF

PCM: £1,550 PCM



coopers
est 1986

A spacious and well presented one bedroom apartment located just a stone's throw from Hayes & Harlington train station providing easy access to Central London via the Elizabeth Line. The property is also within walking distance to local amenities, and provides easy access to Stockley Business Park.

Features include a spacious lounge with access to a private balcony overlooking the canal, fitted kitchen with appliances, double bedroom with built in wardrobe, bathroom with shower, good storage throughout, gym and concierge.

One Bedroom Apartment

Fitted Kitchen With Appliances

Master Bedroom With Fitted Wardrobes

Balcony

Luxury Development

Concierge

Gym

Moment from Hayes & Harlington Station

Elizabeth Line

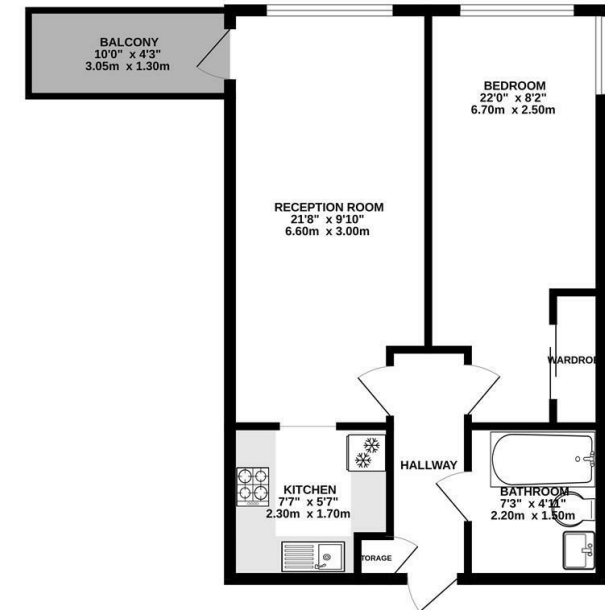
Council Tax Band C

Available Date

7th June 2025



GROUND FLOOR
521 sq.ft. (48.4 sq.m.) approx.



TOTAL FLOOR AREA: 521 sq.ft. (48.4 sq.m.) approx.
While every attempt has been made to ensure the accuracy of the description contained here, measurements of floors, windows, rooms and any other items are approximate and no responsibility is taken for any error, omission or mis-statement. This plan is for illustrative purposes only and should be used as such by any prospective purchaser. The services, fixtures and appliances shown have not been tested and no guarantee as to their operability or efficiency can be given.
Made with Menteo CDD2



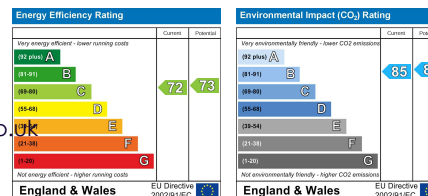
coopers
est 1986

01895 230 103

109 Hillingdon Hill, Hillingdon Village,
Middlesex, UB10 0JQ

propertymanagement@coopersresidential.co.uk

CoopersResidential.co.uk



Important Notice: These particulars, whilst believed to be accurate are set out as a general outline only for guidance and do not constitute any part of an offer or contract. Intending purchasers should not rely on them as statements or representation of fact, but must satisfy themselves by inspection or otherwise has the authority to make or give any representation or warranty in respect of the property.