

Clovelly Court

Drayton Garden Village • West Drayton • UB7 9GU
PCM: £1,775 PCM



coopers
est 1986

A stunning Luxury 3rd floor apartment situated in the Drayton Garden Village development in West Drayton. Located close to Stockley Park Business Center and within easy reach of Heathrow Airport as well as both Uxbridge and West Drayton high streets.

Accommodation; Two bedrooms (master with en-suite bathroom), further Luxury bathroom, large lounge with door leading to private balcony, utility room and fully fitted luxury kitchen with appliances. Benefits; gas central heating, double glazing, lift and allocated parking.

Two double bedrooms

Allocated parking

Great transport links

Close to Brunel University

Easy access to M4/M25

Fully furnished

A stone's throw from Heathrow Airport

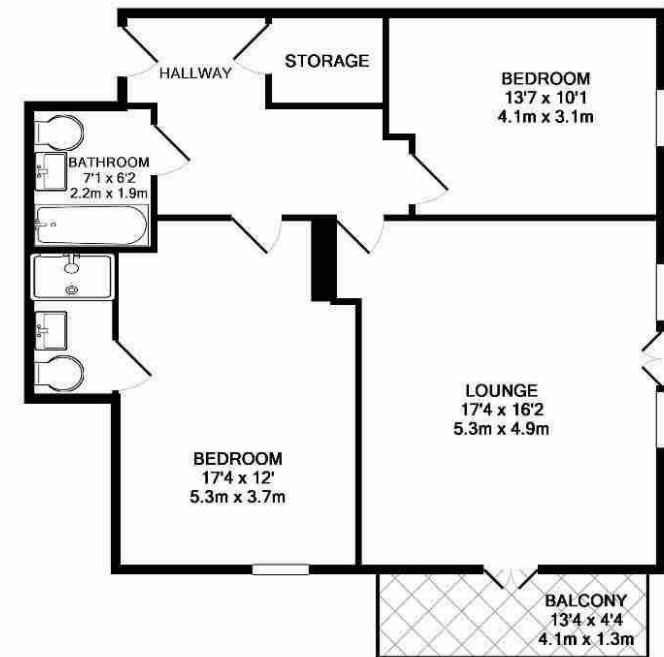
Close to Stockley Park

Great local amenities

West Drayton Station

Available Date

2nd June 2025



TOTAL APPROX. FLOOR AREA 73.8 SQ.M. (794 SQ.FT.)

Whilst every attempt has been made to ensure the accuracy of the floor plan contained here, measurements of doors, windows, rooms and any other items are approximate and no responsibility is taken for any error, omission, or mis-statement. This plan is for illustrative purposes only and should be used as such by any prospective purchaser. The services, systems and appliances shown have not been tested and no guarantee as to their operability or efficiency can be given.
Made with Metropix ©2015



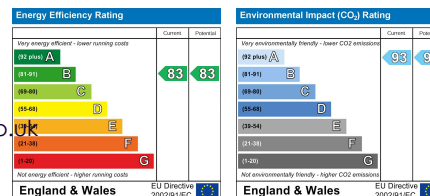
coopers
est 1986

01895 230 103

109 Hillingdon Hill, Hillingdon Village,
Middlesex, UB10 0JQ

propertymanagement@coopersresidential.co.uk

CoopersResidential.co.uk



Important Notice: These particulars, whilst believed to be accurate are set out as a general outline only for guidance and do not constitute any part of an offer or contract. Intending purchasers should not rely on them as statements or representation of fact, but must satisfy themselves by inspection or otherwise has the authority to make or give any representation or warranty in respect of the property.