

# Ascot Gardens

Southall • Middlesex • UB1 2SB

PCM: £2,600 PCM



coopers  
est 1986

A spacious and newly refurbished three/four bedroom terraced house to rent in the heart of Southall. This property is located just off Lady Margaret Road and within close proximity of Southall High Street, Mainline Station offering fantastic transport links and local amenities.

Features include three/four bedrooms, two bathrooms, modern open plan kitchen/lounge area, private rear garden and driveway parking.

Unfurnished and available now.

Three/four Bedroom House

Two Bathrooms

Open Living Plan Kitchen/Lounge

Easy access to Mainline Station

Nearby to Local Amenities

Private Rear Garden

Driveway Parking

Gas Central Heating

Unfurnished

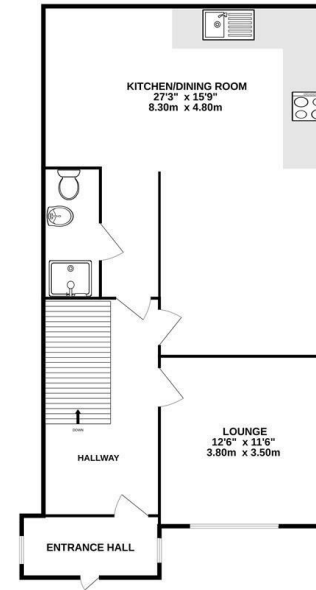
Council Tax Band D

**Available Date**

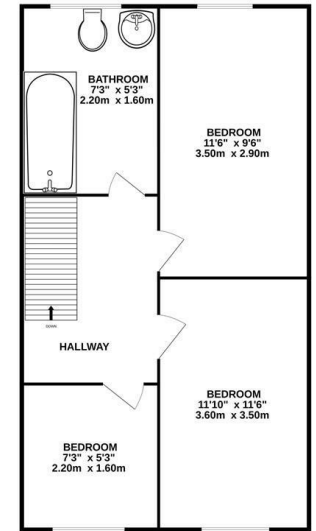
15th March 2025



GROUND FLOOR  
2797 sq.ft. (259.8 sq.m.) approx.



1ST FLOOR  
2689 sq.ft. (249.8 sq.m.) approx.



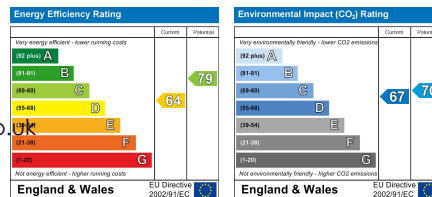
TOTAL FLOOR AREA: 5486 sq.ft. (509.7 sq.m.) approx.  
Model views although not been made to ensure the accuracy of the description contained herein. Measurements of doors, windows, rooms and any other items are approximate and no responsibility is taken for any error, omission or misstatement. This plan is for guidance purposes only and should be used in conjunction with any prospective purchaser. The services, systems and appliances shown have not been tested and no guarantee as to their operability or efficiency can be given.  
 Made with Mapogen ©2023



**01895 230 103**

109 Hillingdon Hill, Hillingdon Village,  
 Middlesex, UB10 0JQ  
 propertymanagement@coopersresidential.co.uk

**CoopersResidential.co.uk**



Important Notice: These particulars, whilst believed to be accurate are set out as a general outline only for guidance and do not constitute any part of an offer or contract. Intending purchasers should not rely on them as statements or representation of fact, but must satisfy themselves by inspection or otherwise has the authority to make or give any representation or warranty in respect of the property.

