

# Haig Road

Uxbridge • • UB8 3EF

PCM: £2,000 PCM



coopers  
est 1986



A three bedroom semi-detached house located on a popular residential road in Hillingdon that has been redecorated throughout. Haig Road is located just off the Uxbridge Road and offers easy access to a number of amenities including schools, numerous local shops and transport links. The accommodation on offer briefly consists of living room leading to large fully fitted kitchen, downstairs WC & private rear garden. Upstairs you will find three well sized bedrooms and further family bathroom.

Driveway Parking

Semi Detached House

Recently Redecorated

Private Rear Garden

Ample Storage Space

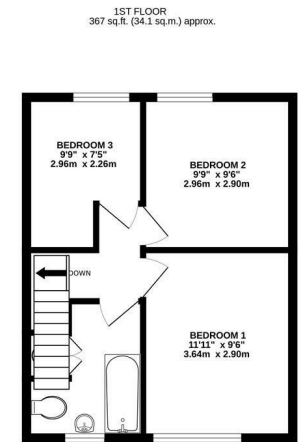
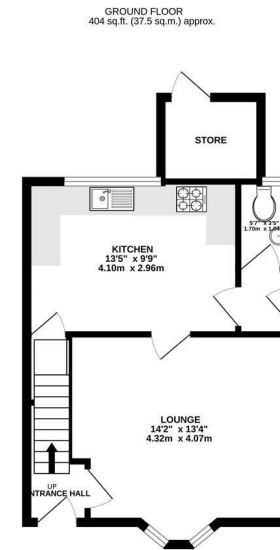
Moments From Connaught Recreation Ground

Local Schools

Council Tax Band D

Available Date

24th July 2024



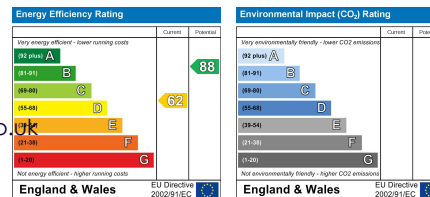
TOTAL FLOOR AREA: 770 sq.ft. (71.6 sq.m.) approx.  
 Whilst every attempt has been made to ensure the accuracy of the floorplan contained herein, measurements of walls, windows, doors and other fixtures are not guaranteed and no responsibility is taken for any error, omission or misstatement. The data in this document is provided for information only and should be used as a guide by any prospective purchaser. The services, systems and appliances shown have not been tested and no guarantee is given as to their operation or efficiency can be given.  
 Made with Mapbox ©2024



01895 230 103

109 Hillingdon Hill, Hillingdon Village,  
 Middlesex, UB10 0JQ  
 propertymanagement@coopersresidential.co.uk

CoopersResidential.co.uk



Important Notice: These particulars, whilst believed to be accurate are set out as a general outline only for guidance and do not constitute any part of an offer or contract. Intending purchasers should not rely on them as statements or representation of fact, but must satisfy themselves by inspection or otherwise has the authority to make or give any representation or warranty in respect of the property.

