

Hurley House

West Drayton • Middlesex • UB7 9FH
PCM: £2,100 PCM



coopers
est 1986



Situated on the popular Park West development is this stunning three bedroom, two bathroom, split-level penthouse apartment with close proximity to Heathrow, Stockley Business Park and West Drayton Main Line station. Comprising of three bedrooms, lounge, modern fitted kitchen, two bathrooms, utility room, landing with stairs leading to the 2nd floor where the two master bedrooms and large storage cupboard can be found. Benefits include undercroft parking, double glazing, entry phone system, concierge and fitness suite.

Gymnasium

Concierge

Easy Access to the Elizabeth Line

Close to West Drayton High Street

Three Double Bedrooms

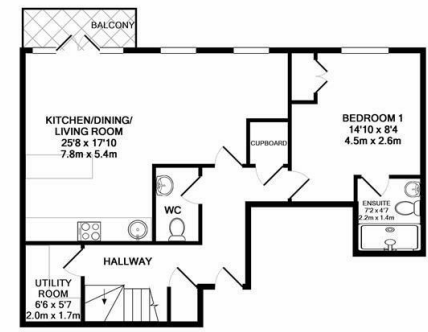
Ideal for Sharers

Lift

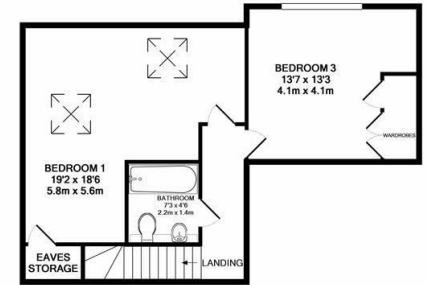
Allocated Parking Space

Balcony

Great Transport Links



GROUND FLOOR



1ST FLOOR

TOTAL APPROX. FLOOR AREA 1320 SQ.FT. (122.6 SQ.M.)
 Whilst every attempt has been made to ensure the accuracy of the floor plan contained here, measurements of doors, windows, rooms and any other items are approximate and no responsibility is taken for any error, omission, or mis-statement. This plan is for illustrative purposes only and should be used as such by any prospective purchaser. The services, systems and appliances shown have not been tested and no guarantee as to their operability or efficiency can be given.
 Made with Metropix ©2018



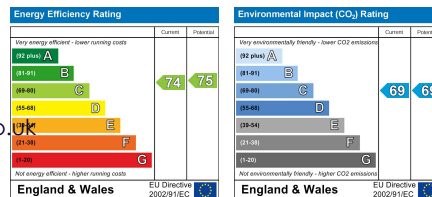
Available Date

12th July 2024

01895 230 103

109 Hillingdon Hill, Hillingdon Village,
 Middlesex, UB10 0JQ
 propertymanagement@coopersresidential.co.uk

CoopersResidential.co.uk



Important Notice: These particulars, whilst believed to be accurate are set out as a general outline only for guidance and do not constitute any part of an offer or contract. Intending purchasers should not rely on them as statements or representation of fact, but must satisfy themselves by inspection or otherwise has the authority to make or give any representation or warranty in respect of the property.

