

# 9 Pressing Lane

Hayes • • UB3 1FE  
PCM: £1,595 PCM



coopers  
est 1986

Presented to the market, this one bedroom apartment located in an exciting new development next to Hayes and Harlington Train Station, which also provides easy access to local amenities. Features include one double bedroom with built in wardrobes, bathroom with bath tub & shower, spacious lounge, fitted kitchen with appliances and ample storage

Parking available at an additional cost of £100 pcm. Available Furnished.

The pictures shown are pictures of the show flat and not this particular unit.

Pet Friendly

Flexible Tenancies

Fully Managed

Secure Entry Phone System

Next to Hayes & Harlington Station

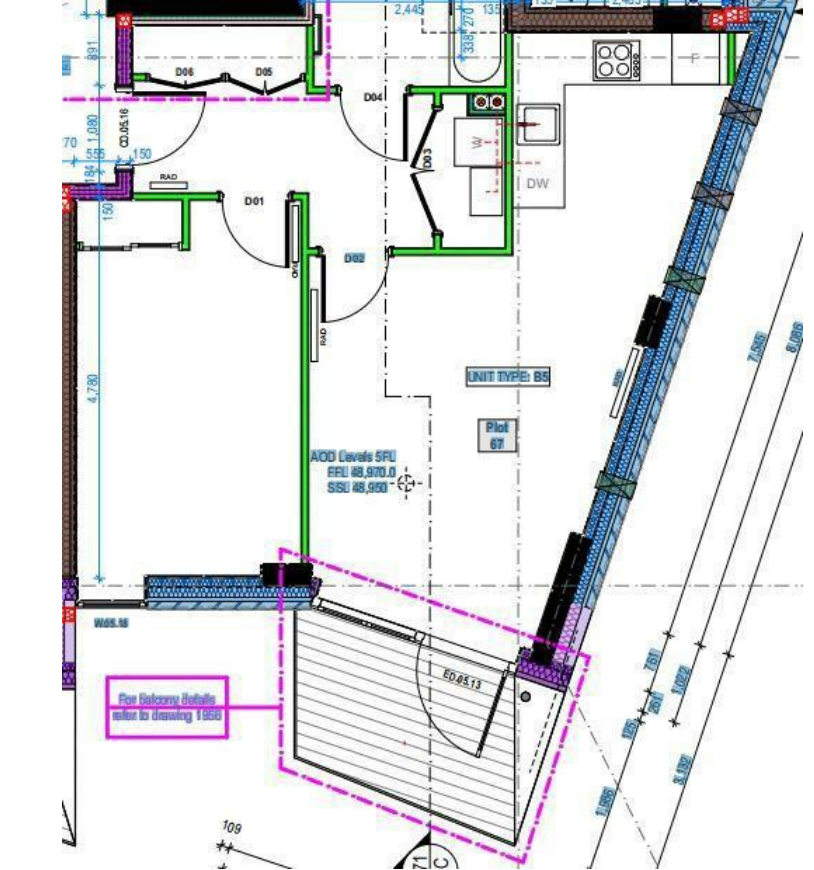
Parking Available at Additional Cost of £100pcm

High Specification

Private Balcony

Local Amenities

Fully Fitted Kitchen with Appliances



**Available Date**

12th July 2024

**01895 230 103**

**109 Hillingdon Hill, Hillingdon Village,  
Middlesex, UB10 0JQ**  
propertymanagement@coopersresidential.co.uk

**CoopersResidential.co.uk**

Energy Efficiency Rating		Environmental Impact (CO <sub>2</sub> ) Rating	
Very energy efficient - lower running costs	Current	Very environmentally friendly - lower CO <sub>2</sub> emissions	Current
32 pmi A		22 pmi A	
31-31 pmi B		21-21 pmi B	
29-31 pmi C		20-21 pmi C	
25-31 pmi D		19-20 pmi D	
23-24 pmi E		18-19 pmi E	
21-22 pmi F		17-18 pmi F	
19-20 pmi G		16-17 pmi G	
Not energy efficient - higher running costs		Not environmentally friendly - higher CO <sub>2</sub> emissions	
England & Wales	EU Directive 2002/91/EC	England & Wales	EU Directive 2002/91/EC

Important Notice: These particulars, whilst believed to be accurate are set out as a general outline only for guidance and do not constitute any part of an offer or contract. Intending purchasers should not rely on them as statements or representation of fact, but must satisfy themselves by inspection or otherwise has the authority to make or give any representation or warranty in respect of the property.

**coopers**  
est 1986