

## Finchley Lane, Hendon, London NW4

1 bedroom second floor apartment extending to 560. 6sq.ft (52sq.m) situated within this bespoke modern development.

Offers in Excess of  
**£320,000**  
Share of Freehold

# Finchley Lane, Hendon, London NW4

## Overview

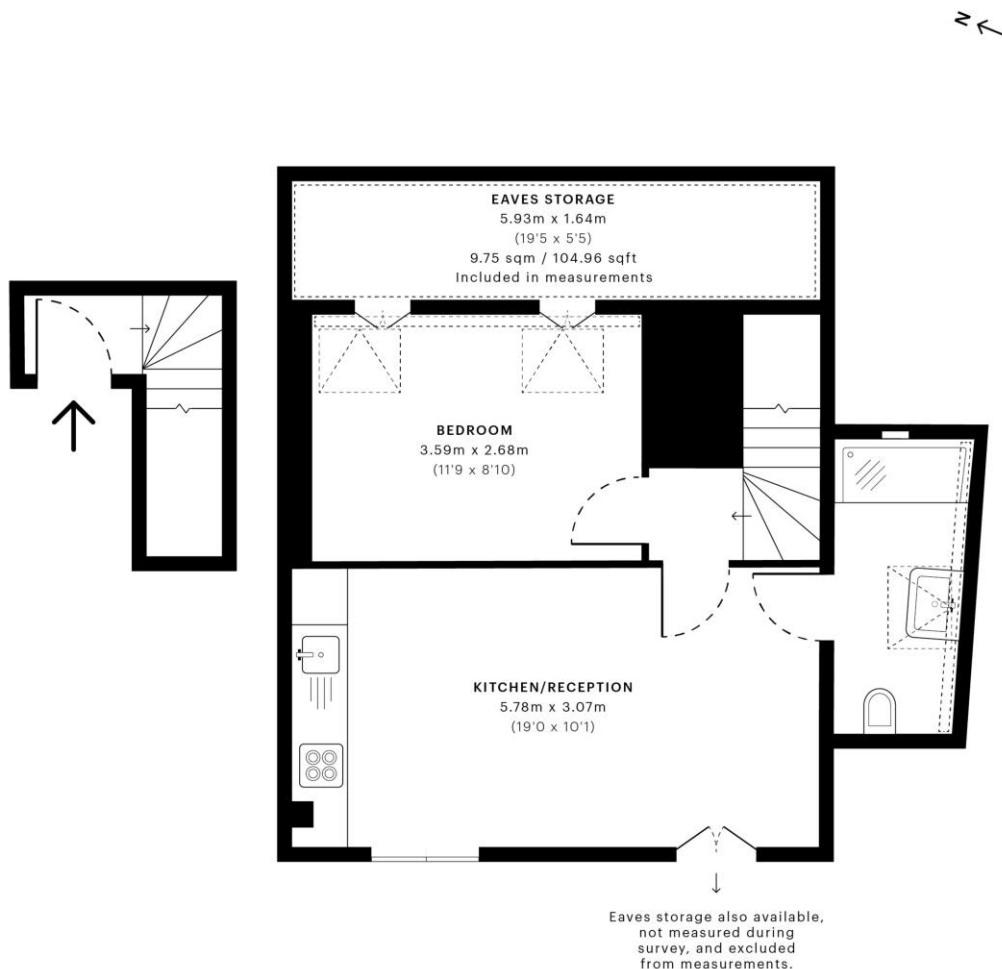
- 1 BEDROOM APARTMENT
- SHOWER ROOM (ONE EN-SUITE)
- MODERN FITTED KITCHEN WITH SMEG APPLIANCES
- SHARED GARDEN
- OFF STREET PARKING
- LEASEHOLD



The accommodation boasts an open plan kitchen/dining /living room with the kitchen boasting Smeg appliances handle less fitted units and stone work tops. The property further comprises a master bedroom and a contemporary designed shower room.

Added benefits include video phone entry system, 10 year building warranty, Driveway parking space and garden shared between two apartments. The property is located within a short walk of Brent Street's shopping amenities, Hendon Central under ground station and major road links into and out of Central London. Sole Agents





— First Floor

— Second Floor

**GROSS INTERNAL AREA (GIA)**  
The footprint of the property  
52.08 sqm / 560.58 sqft

**NET INTERNAL AREA (NIA)**  
Excludes walls and external features  
Includes washrooms, restricted head height  
35.99 sqm / 387.39 sqft

**EXTERNAL STRUCTURAL FEATURES**  
Balconies, terraces, verandas etc.  
0.00 sqm / 0.00 sqft

**RESTRICTED HEAD HEIGHT**  
Limited use area under 1.5 m  
11.03 sqm / 118.73 sqft



Spec: Verified floor plans are produced in accordance with Royal Institution of Chartered Surveyors' Property Measurement Standards. Plans and gardens are illustrative only and excluded from all area calculations. Due to rounding, numbers may not add up precisely. All measurements shown for the individual room lengths and widths are the maximum points of measurements captured in the scan.

IPMS-3B RESIDENTIAL 50.13 sqm / 539.59 sqft  
IPMS-3C RESIDENTIAL 45.00 sqm / 483.54 sqft

SPEC ID 56329d76a9a52ce0e1412f2cc

## Selling your home?

If you are considering selling your home please contact us today for your no obligation free market appraisal.

Our dedicated and friendly team will assist you. Get in touch today!



1 Sentinel Square, Brent Street, Hendon, NW4 2EL

020 8203 2111 • mail@theroundtree.com



www.theroundtree.com

General: While we endeavour to make our sales particulars fair, accurate and reliable, they are only a general guide to the property and, accordingly, if there is any point which is of particular importance to you, please contact the office and we will be pleased to check the position for you, especially if you are contemplating travelling some distance to view the property. Measurements: These approximate room sizes are only intended as general guidance. You must verify the dimensions carefully before ordering carpets or any built-in furniture. Services: Please note we have not tested the services or any of the equipment or appliances in this property, accordingly we strongly advise prospective buyers to commission their own survey or service reports before finalizing their offer to purchase. THESE PARTICULARS ARE ISSUED IN GOOD FAITH BUT DO NOT CONSTITUTE REPRESENTATIONS OF FACT OR FORM PART OF ANY OFFER OR CONTRACT. THE MATTERS REFERRED TO IN THESE PARTICULARS SHOULD BE INDEPENDENTLY VERIFIED BY PROSPECTIVE BUYERS OR TENANTS. NEITHER ROUNDTREE NOR ANY OF ITS EMPLOYEES OR AGENTS HAS ANY AUTHORITY TO MAKE OR GIVE ANY REPRESENTATION OR WARRANTY WHATSOEVER IN RELATION TO THIS PROPERTY.