



## **COURTNEY HOUSE**

Mulberry Close,  
Hendon, London NW4







Guide Price £270,000  
EPC Rating: E

Situated in this popular gated development is  
this one bedroom ground floor garden  
apartment.





The property extends to 600sq.ft (55.7sq.m) and comprises a good size bedroom, living room, fitted kitchen, bathroom and spacious reception hallway. Externally there is a good size private garden terrace, well presented communal gardens and communal parking. The property is well situated for Brent Streets shopping amenities and within walking distance of Hendon Central Underground.



- 1 Bedroom
- 600sq.ft (55.7sq.m)
- Fitted kitchen
- Bathroom
- Reception room
- Reception hallway
- Private garden terrace









# Hendon

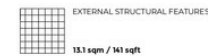
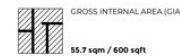
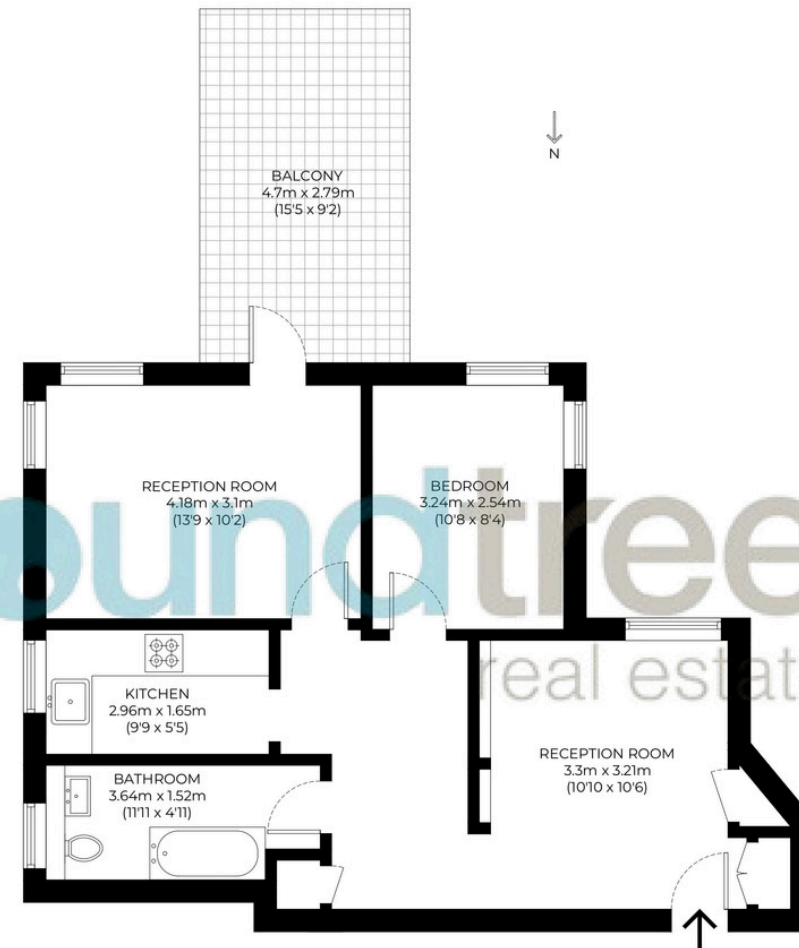
Hendon is a cosmopolitan, multicultural area that benefits from a relaxed pace of life and a wide range of attractive amenities. Hendon's transport connections are excellent, with the M1 nearby and easy access to central London along the Northern Line. Thanks to its diverse population, Hendon has some of the best restaurants in north London, while its popularity with families ensures there is a good selection of schools.

While Hendon property prices have done well over the last few years, the area still represents a good-value option for renting or buying when compared against other parts of London.

# Floorplan

Approximate gross internal area

55.7 sqm / 600 sqft





020 8203 2111  
www.theroundtree.com

roundtree  
real estate

To register your interest:

020 8203 2111

[sales@theroundtree.com](mailto:sales@theroundtree.com)

[theroundtree.com](http://theroundtree.com)

1 Sentinel Square, Brent Street Hendon, NW4 2EL





General: While we endeavor to make our sales particulars fair, accurate and reliable, they are only a general guide to the property and, accordingly, if there is any point which is of particular importance to you, please contact the office and we will be pleased to check the position for you, especially if you are contemplating travelling some distance to view the property. Measurements: These approximate room sizes are only intended as general guidance. You must verify the dimensions carefully before ordering carpets or any built-in furniture. Services: Please note we have not tested the services or any of the equipment or appliances in this property, accordingly we strongly advise prospective buyers to commission their own survey or service reports before finalizing their offer to purchase. THESE PARTICULARS ARE ISSUED IN GOOD FAITH BUT DO NOT CONSTITUTE REPRESENTATIONS OF FACT OR FORM PART OF ANY OFFER OR CONTRACT. THE MATTERS REFERRED TO IN THESE PARTICULARS SHOULD BE INDEPENDENTLY VERIFIED BY PROSPECTIVE BUYERS OR TENANTS. NEITHER ROUNDTREE NOR ANY OF ITS EMPLOYEES OR AGENTS HAS ANY AUTHORITY TO MAKE OR GIVE ANY REPRESENTATION OR WARRANTY WHATEVER IN RELATION TO THIS PROPERTY.