

roundtree

real estate



Greenacres, Hendon Lane, Finchley N3

£624,500



3



2



Y

Leasehold



BRITISH
PROPERTY
AWARDS

2022



GOLD WINNER

ESTATE AGENT
IN NW4



BRITISH
PROPERTY
AWARDS

2022 - 2023



GOLD WINNER

LETTING AGENT
IN NW4

A fresh approach to your property journey...

An open plan and very spacious three bedroom two bathroom (One Ensuite) second floor apartment, good sized kitchen with built in table. Built in bedroom wardrobes to two of the bedrooms. overlooking a scenic garden plus lock up garage and forecourt parking.



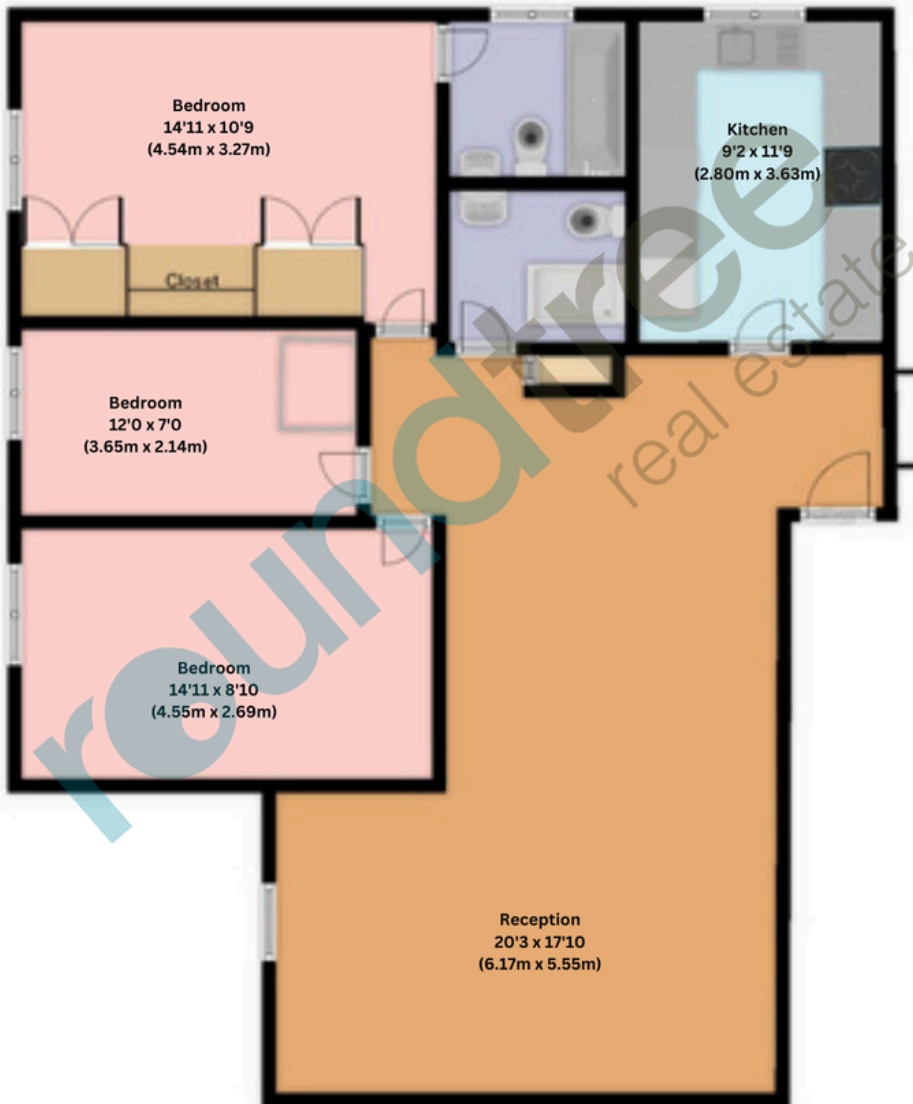
- Three Bedrooms
- Two Bathrooms (One Ensuite)
- Spacious Living room
- Separate Kitchen
- Long Lease
- Detached Garage
- Communal Gardens
- Chain Free
- Sole Agent



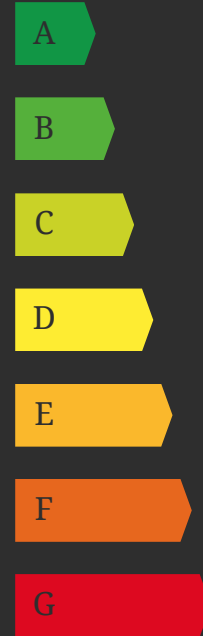


situated in this much sought after development within walking distance of local Schools, places of worship and major bus routes as well as, Finchley central tube station (Northern Line - 25 minutes to Central London), plus close proximity to shopping facilities and local amenities.

FLOOR PLAN



EPC



Greenacres, Finchley, London, N3

APPROX. GROSS INTERNAL FLOOR AREA 976 sq. ft / 90.66 sq. m

Floorplan is for illustrative purposes only and is not to scale.
Every attempt has been made to ensure the accuracy of the floorplan shown, however all measurements, fixtures, fittings and data show are an approximate interpretation for illustrative purposes only.
Liability for errors, omissions or mis-statement through negligence or otherwise is hereby excluded.

1 Sentinel Square, Brent Street
Hendon, NW4 2EL

020 8203 21111

mail@theroundtree.com

theroundtree.com

Selling your home?

If you are considering selling your home please contact us today for your no obligation free market appraisal.

Our dedicated and friendly team will assist you.

Get in touch today!



General: While we endeavor to make our sales particulars fair, accurate and reliable, they are only a general guide to the property and, accordingly, if there is any point which is of particular importance to you, please contact the office and we will be pleased to check the position for you, especially if you are contemplating travelling some distance to view the property. Measurements: These approximate room sizes are only intended as general guidance. You must verify the dimensions carefully before ordering carpets or any built-in furniture. Services: Please note we have not tested the services or any of the equipment or appliances in this property, accordingly we strongly advise prospective buyers to commission their own survey or service reports before finalizing their offer to purchase. THESE PARTICULARS ARE ISSUED IN GOOD FAITH BUT DO NOT CONSTITUTE REPRESENTATIONS OF FACT OR FORM PART OF ANY OFFER OR CONTRACT. THE MATTERS REFERRED TO IN THESE PARTICULARS SHOULD BE INDEPENDENTLY VERIFIED BY PROSPECTIVE BUYERS OR TENANTS. NEITHER ROUNDTREE NOR ANY OF ITS EMPLOYEES OR AGENTS HAS ANY AUTHORITY TO MAKE OR GIVE ANY REPRESENTATION OR WARRANTY WHATSOEVER IN RELATION TO THIS PROPERTY.

A fresh approach to your property journey...