

roundtree

real estate



Corrigan Close, Hendon NW4

£2,900,000



6



3



Y

FREEHOLD



BRITISH
PROPERTY
AWARDS

2022

★★★★★

GOLD WINNER

ESTATE AGENT
IN NW4



BRITISH
PROPERTY
AWARDS

2022 - 2023

★★★★★

GOLD WINNER

LETTING AGENT
IN NW4

A fresh approach to your property journey...

Set in this gated development within a discreet turning off Parson Street is this luxury six bedroom three bathroom impressive Detached home situated on a wider than average plot in one of Hendon's premier residential turnings.



- Six bedrooms
- Three bathrooms
- Large Living room
- Fully fitted Kitchen/Breakfast room
- 3553 SQ FT of living space
- Spacious Rear Garden
- Garage
- Driveway for Off Street Parking
- Gated development
- Chain Free
- Sole Agents





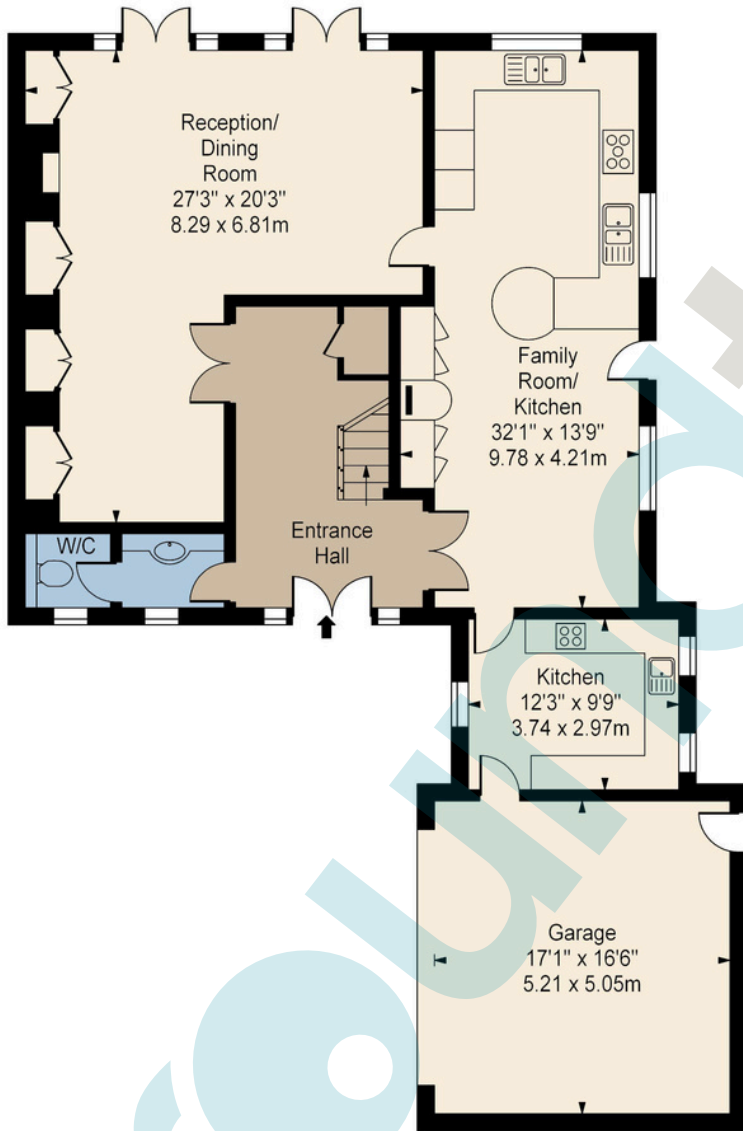
This modern six bedroom home has been meticulously looked after throughout and finished with a high attention to both detail and design. Offering spacious and flexible living accommodation over three floors and spanning 3,553 Sq ft (330 Sq m) the house benefits from an indulgent master bedroom suite, a fully fitted and equipped kitchen/breakfast room, stunning dining room, study room, large rear garden, garage in addition to allocated parking. It is located close to Brent Street and all of its amenities and access to all major transport links.



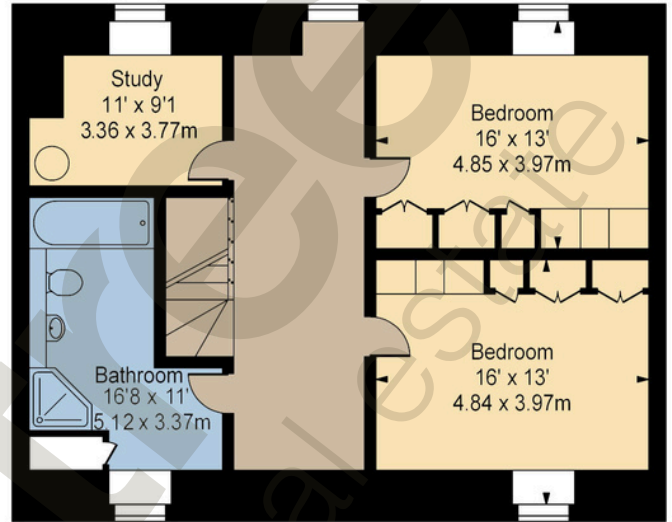
Chain Free. Sole Agents. Viewing Recommended.

A fresh approach to your property journey...

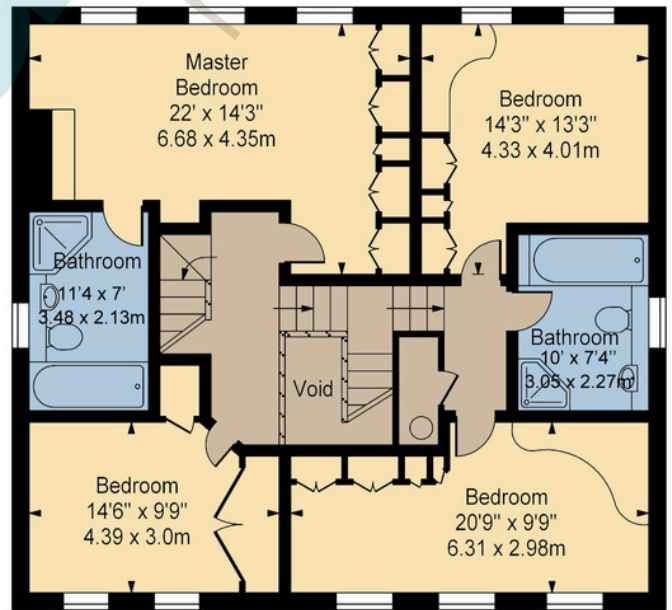
FLOOR PLAN



Ground Floor



Second Floor



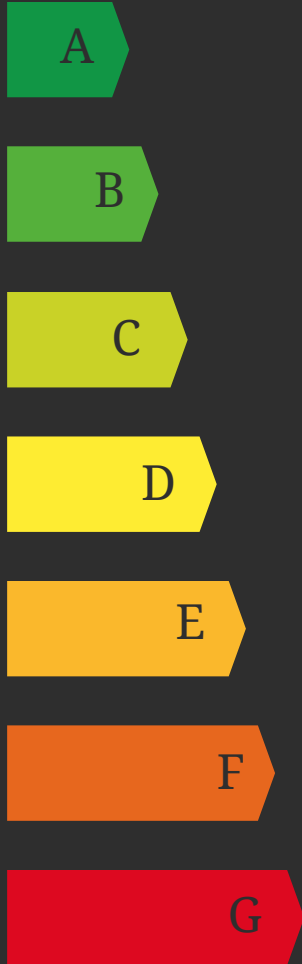
First Floor

Approx. Gross Internal Area 3553 Sq Ft - 330.47 Sq M

For Illustration Purposes Only - Not To Scale Floor Plan by www.pmsupply.co.uk Ref: No. 5728

This floor plan should be used as a general outline for guidance only and do not constitute in whole or in part an offer or contract.
Any intending purchaser or lessee should satisfy themselves by inspection, searches, enquiries and full survey as to the correctness of each statement.
Any areas, measurements or distances quoted are approximate and should not be used to value a property or be the basis of any sale or let.

EPC



1 Sentinel Square, Brent Street
Hendon, NW4 2EL

020 8203 2111

mail@theroundtree.com

theroundtree.com

Selling your home?

If you are considering selling your home please contact us today for your no obligation free market appraisal.

Our dedicated and friendly team will assist you.

Get in touch today!



General: While we endeavor to make our sales particulars fair, accurate and reliable, they are only a general guide to the property and, accordingly, if there is any point which is of particular importance to you, please contact the office and we will be pleased to check the position for you, especially if you are contemplating travelling some distance to view the property. Measurements: These approximate room sizes are only intended as general guidance. You must verify the dimensions carefully before ordering carpets or any built-in furniture. Services: Please note we have not tested the services or any of the equipment or appliances in this property, accordingly we strongly advise prospective buyers to commission their own survey or service reports before finalizing their offer to purchase. THESE PARTICULARS ARE ISSUED IN GOOD FAITH BUT DO NOT CONSTITUTE REPRESENTATIONS OF FACT OR FORM PART OF ANY OFFER OR CONTRACT. THE MATTERS REFERRED TO IN THESE PARTICULARS SHOULD BE INDEPENDENTLY VERIFIED BY PROSPECTIVE BUYERS OR TENANTS. NEITHER ROUNDTREE NOR ANY OF ITS EMPLOYEES OR AGENTS HAS ANY AUTHORITY TO MAKE OR GIVE ANY REPRESENTATION OR WARRANTY WHATEVER IN RELATION TO THIS PROPERTY.

A fresh approach to your property journey...